



*2005-2006*  
**ANNUAL**  
**REPORT**

**MEDIA RESOURCES CENTER  
WSU-TV  
KMUW FM89**

**ANNUAL REPORT**

**Fiscal Year 2006**

**Media Resources Center  
WSU-TV  
KMUW FM89**



**WICHITA STATE UNIVERSITY**

## TABLE OF CONTENTS

Year in Review/Highlights of Fiscal Year 2006 .....	1
Mission Statements .....	3
Organizational Chart for KMUW .....	4
Organizational Chart for Media Resources/WSU-TV .....	5
WSU-TV .....	6
Telecourses .....	7
Interactive Television Courses .....	10
Telenet 2.....	11
New Media .....	12
Satellite Conferences .....	15
Videoconferences .....	16
Campus Media Services .....	18
Capital Equipment Purchases.....	21
Video Services .....	23
Engineering Services .....	26
Administration .....	28
KMUW Radio .....	29
WRRS Radio .....	39
Staff Development .....	42

## YEAR IN REVIEW - Highlights of Fiscal Year 2006

Video Services recorded an SGA-sponsored debate on the pros and cons of TABOR (Taxpayer Bill of Rights). The program aired on WSU-TV.

KMUW raised over \$477,000 from listeners and underwriters.

The MRC purchased a news/weather feed to enhance the Campus Information Channel. New monitors were added in Duerkson Fine Arts Building, Wallace Hall, and the Engineering Building. The CIC service was extended to the new Westside campus.

WRRS (Wichita Radio Reading Service) received a gift of \$100,000 from the estate of Katherine Lyons.

A decision was made to assign a Blackboard course shell to all courses and sections, no longer requiring the trigger of a faculty request. Thus, our base for assessing faculty participation will need to change.

The number of DVD duplications increased three-fold.

KMUW initiated *Literary Feasts*, a monthly book review and dinner series held at Watermark Books.

Tom Brock was elected as President of the Unclassified Senate.

Students and faculty began to inquire about the possibilities of podcasting.

A visual student roster was developed for Blackboard, so that instructors could see Shocker Card photos for each enrollee.

Julie Bath, Educational Technologist, left the MRC for a position in the College of Education. Indika McCampbell was promoted into Julie's position.

Several hundred middle school students participated in another round of the JASON project, this time being transported, through video conferencing technology, to a desert in Arizona, to explore a Mars simulation.

Laptop computer circulation continued to grow, while data projector circulation numbers declined, in line with the permanent projector installations in: AH 208 & 214, Heskett 208, Hubbard 219, 220, 229, & 230, Lindquist 104, McKinley 105, 108, 218 & 227 and Neff 209 & 211.

\$1/\$1 Technology funds were used to place a server in the Studio B control room, allowing Elliott School students to move from a 3/4-inch tape environment to a digital server realm.

Video Services provided coverage of the Fall and Spring Commencements. Ceremonies from Koch Arena were streamed to friends and parents around the world.

Several MRC service units supported the 4th Annual Global Learning Conference.

KMUW broadcast 10 interviews and 10 feature reports as part of the Live and Learn Lecture Series at the University of Kansas School of Medicine - Wichita. This was the 3rd year of collaboration with the School of Medicine and the Medical Society of Sedgwick County, which began with a national grant from the Sound Partners for Community Health.

A 45-minute DVD, *The Drama of Creation: Writers on Writing*, was produced for and distributed by Films Media, Inc., in association with The William Inge Center for the Arts.

KMUW discontinued recordings of the Wichita Symphony Orchestra.

Arbitron ratings showed 40,200 individuals listening to KMUW during the average week of the Fall 2005 quarter.

Carol Smith was elected as Vice President of the Council of University Women.

Lee Whitman was awarded \$500 as the winner of the Holman Screenwriting Competition, sponsored by the MRC.

Videoconferencing technology was used to connect WSU trombone students with the New World Symphony in Miami, Florida. The two groups played for each other and critiqued the performances.

Sixteen four-person teams competed in the WRRS Mini-Masters Golf Tournament, raising over \$11,500 for the Reading Service.

Dominik D'Angelo, Marketing Coordinator, left the MRC to pursue a business degree at Thunderbird, the Garvin School of International Management in Phoenix. The MRC's Graphic Services unit was discontinued, so that a Systems Administrator (Wendell Peete) could be added.

KMUW installed the ENCO automation system, allowing a reduction in personnel during late evening hours.

Mike Wood chaired the WIN Portal Team and coordinated the launch of *myWSU*.

## **MISSION STATEMENTS**

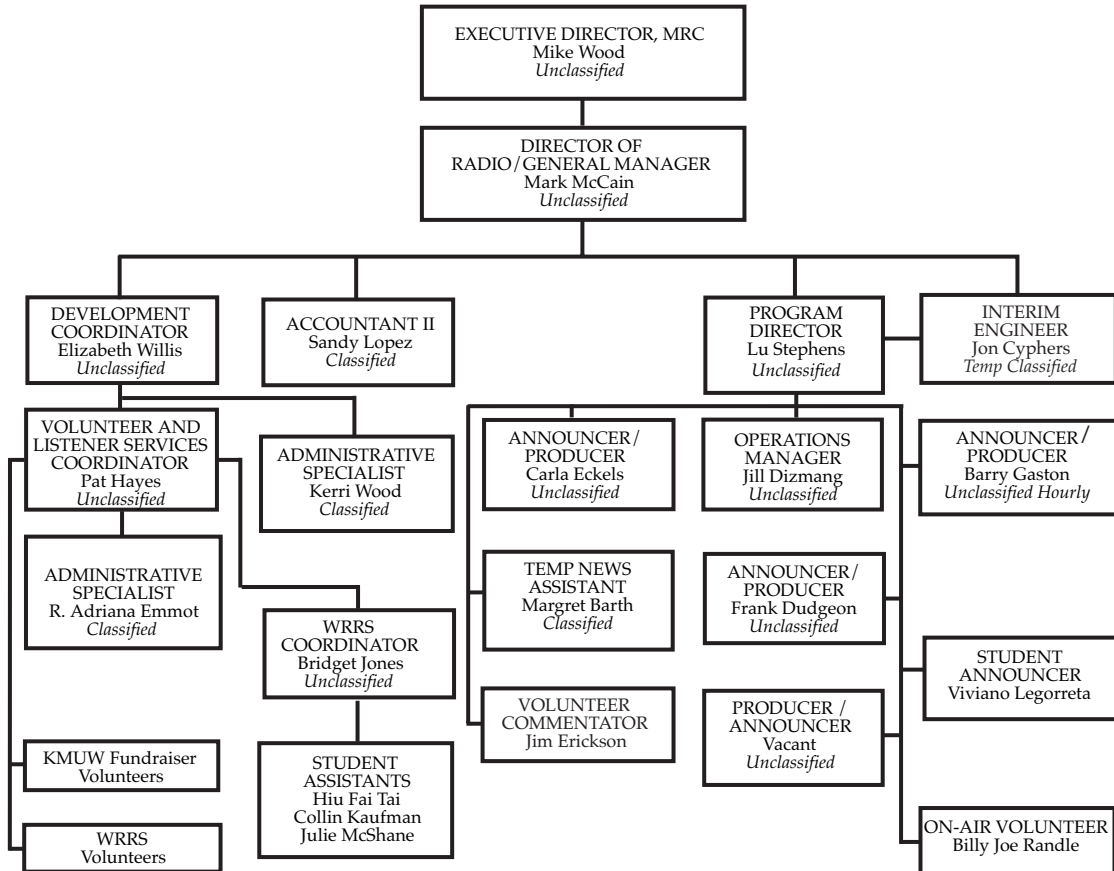
The **Media Resources Center** provides centralized support and innovative leadership for effective and creative use of instructional technologies and informational services throughout Wichita State University.

The Mission of **WSU-TV** is three fold; it provides the University with the opportunity to deliver courses for academic credit via television; it promotes the academic and cultural resources of the University to the community; and it supports the training of students in telecommunications.

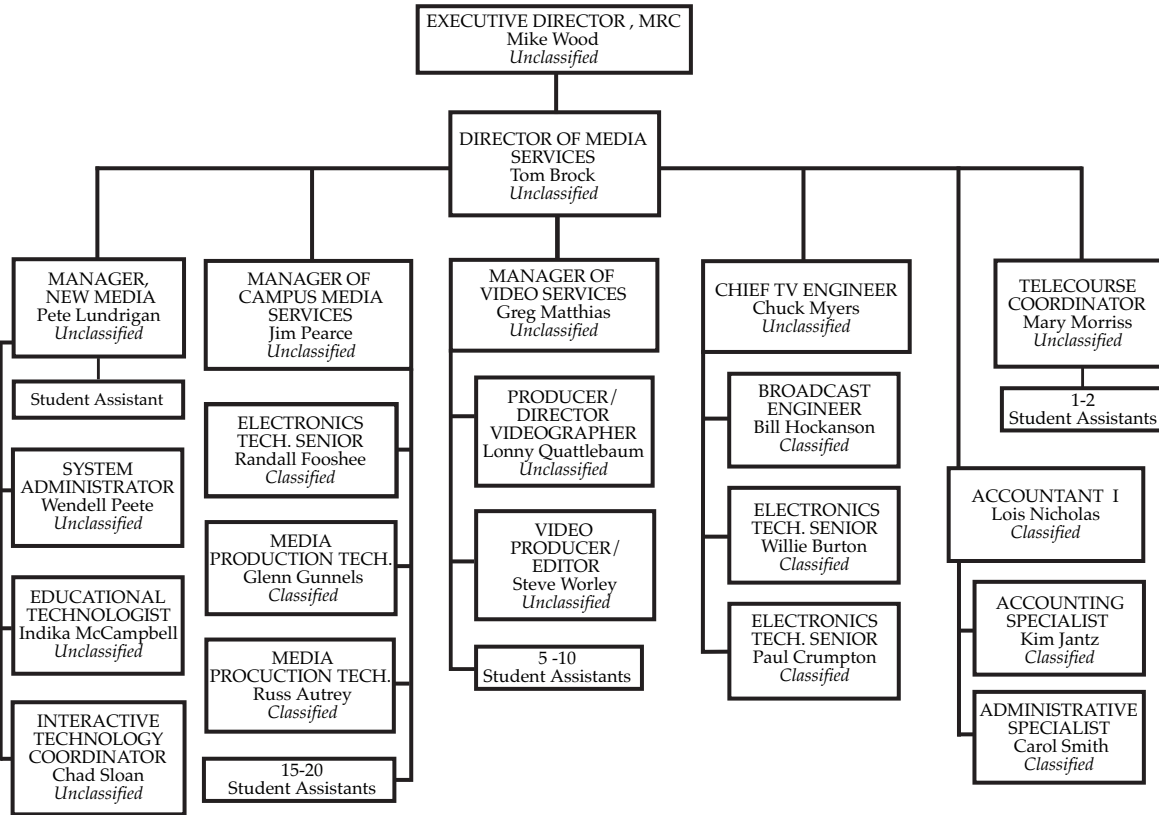
**KMUW** provides the people of South Central Kansas with informative and creative radio programming, to meet the educational and entertainment needs of a supportive radio audience, while enhancing and extending the services of WSU.

**WRRS** provides the print handicapped of South Central Kansas with daily readings of newspapers and current periodicals, while enhancing and extending the services of KMUW and WSU.

**Wichita State University KMWU Radio**  
(FY 2006)



**Wichita State University Media Resources Center/WSU-TV**  
(FY 2006)



# WSU-TV

## Communities served and numbers of subscribers

Wichita *	162,104
-----------	---------

## List of special broadcasts

Economic Outlook	1
James P. Schwartz Memorial Lecture	1
TABOR Debate	1
Wichita Lyceum	1
Campus Exposures	5
STUDIO B	<u>22</u>
	31

## Number of Public Service Announcements (PSAs) broadcast

National PSAs	2930
Local PSAs	2433
Totals	5363

\* Includes

Wichita, Derby Haysville, Mulvane,  
Andover, Goddard, Rose Hill, Augusta,  
Valley Center, Maize, Sedgwick, Halstead,  
Hesston, Bel Aire, Eastborough, Kechi,  
McConnell AFB, Park City, Arkansas City,  
El Dorado, Newton, North Newton, Towanda, Winfield

# TELECOURSES

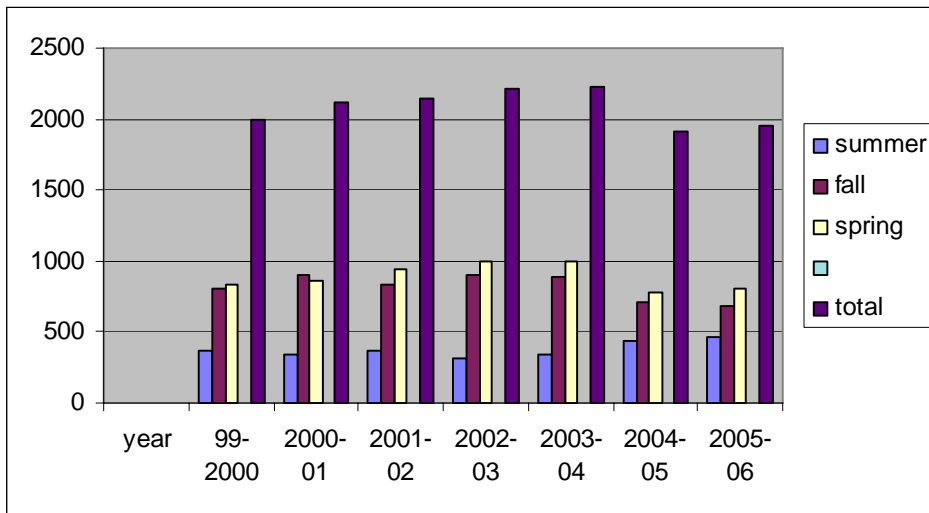
DEPT	NO	TITLE OF COURSE	LINE #	INSTRUCTOR	TOTAL
SUMMER 2005					
Eth S	360	Dealing With Diversity	02058	Elliott	64
Fin	140Q	Finance	04942	Ward	16
Geog	210	Intro to World Geog	02136	Torbenson	31
Geol	102	Earth, Science and Env	02169	Crane	34
Geol	102	Earth, Science and Env	02160	Jackman	24
Geol	102	Earth, Science and Env'	02178	Turner	27
Geol	310	Oceanography	02187	Jackman	56
Geol	310	Oceanography	02196	Crane	57
Hist	131	US History to 1865	02428	Austin	38
Hist	132	US History Since 1865	02446	Austin	50
Psy	111Q	Psychology	03427	Grosch	21
Soc	399E	Gender Roles	03831	Matson	30
WomS	380E	Gender Roles	04338	Matson	14
				Total	462

DEPT	NO	TITLE OF COURSE	LINE #	INSTRUCTOR	TOTAL
FALL 2005					
Anth	102	Faces of Culture	00045	Ricke	14
Anth	102	Faces of Culture	00054	Eisenzimmer	16
Chem	102	Intro to Chemistry	02433	Singhall	9
Comm	111	Public Speaking	03384	Barlow	21
Econ	202	Economics	15292	Clark	35
Eng	230	Exploring Literature	06633	Beaddien	23
Fin	140	Finance	16029	Ward	26
Geol	102	Earth, Science and Env	07326	Crane	43
Geol	102	Earth, Science and Env	07344	Jackman	33
Geol	302	Earth, Sea and Sky	07506	Cao	51
Geol	310	Oceanography	07524	Jackman	87
Geron	100	Intro to Gerontology	07746	Elliott	34
Hist	101	Western Civ part 1	07972	Schellinger	40
Hist	132	US History Since 1865	08062	Dehner	50
Hist	399	Peoples Century 1	08143	Dreifort	27
LASI	101	Intro to University	08419	Roselle	28
Pol S	121	American Politics	11826	Kahn	16
Psy	111Q	Psychology	12129	Grosch	18

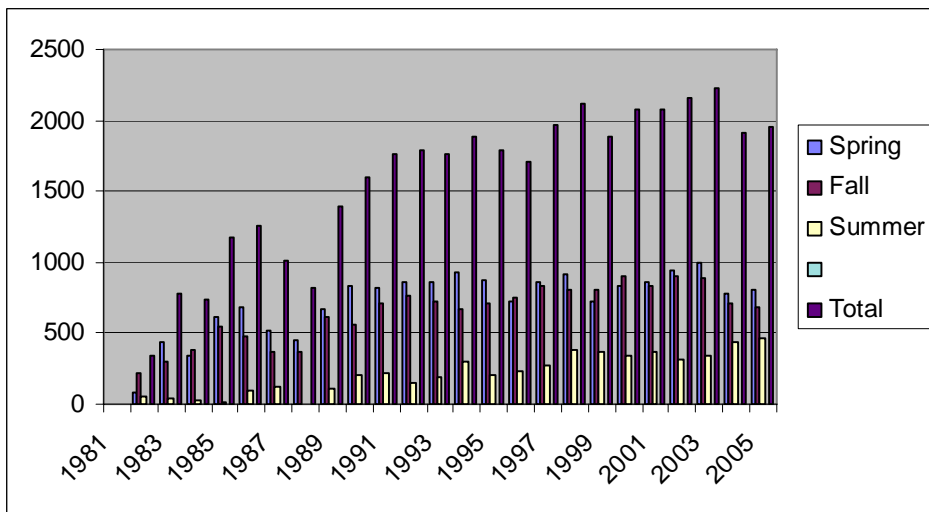
Soc	111Q	Intro to Sociology	13586	Tones	33
Soc	315Q	Marriage and Family	13622	Tones	41
Soc	338	Health and Lifestyle	13658	Perez	<u>44</u>
				Total	689

DEPT	NO	TITLE OF COURSE	LINE #	INSTRUCTOR	TOTAL
SPRING 2006					
Acct	210	Financial Acct	14519	Montgomery	20
Acct	220	Managerial Acct	14564	Montgomery	30
Anth	102	Faces of Culture	00045	Ricke	21
Anth	102	Faces of Culture	00054	Eisenzimmer	12
Comm	111	Public Speaking	03393	Barlow	22
Econ	752W	Economics	15279	Barnhard	0
Eth S	360	Dealing with Diversity	06819	Elliott	40
Fin	140	Finance	15691	Ward	40
Geog	210	Intro to World Geog	06933	Torbenson	44
Geol	102	Earth, Science and Env	07002	Jackman	35
Geol	302	Earth, Sea and Sky	07155	Cao	34
Geol	310	Oceanography	07173	Jackman	83
Geron	100	Intro to Gerontology	07431	Elliott	35
Geron	550 N	Death and Dying	07485	Redd	31
Geron	850 B	Death and Dying	07584	Redd	9
Hist	101	Western Civilization	07666	Swendler	27
Hist	132	US History Since 1865	07747	Owens	60
Hist	399M	People's Century II	07882	Dreifort	18
LAS	101	Intro to the University	07882	Rozzele	29
Mus C	161	Music through the Ages	28453	Edwards	38
Phy	195	Intro to Mod, Astron	10897	Novacek	30
Phy	501	Astron for Educators	11158	Novacek	1
Psy	111Q	Psychology	11737	Grosch	26
Soc	111Q	Intro to Sociology	13338	Tones	35
Soc	315Q	Marriage and Family	13365	Tones	43
Soc	338	Health and Lifestyle	13410	Perez	<u>45</u>
				Total	808

### TELECOURSE ENROLLMENT



### TELECOURSE ENROLLMENT HISTORY



# INTERACTIVE TELEVISION COURSES

## ITV COURSES AND ENROLLMENTS BY SEMESTER (5 COURSES, 85 STUDENTS)

Summer 2005

**No Courses were offered in Summer 2005**

Fall 2005

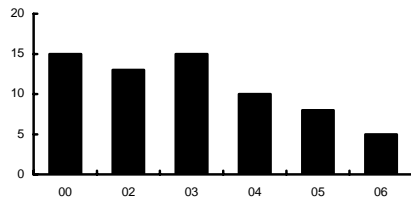
English 101	College English	4
Nursing 795	Applied Drug Therapy	20
Nursing 803	Primary Care I	21
<b>Total</b>		<b>45</b>

Spring 2006

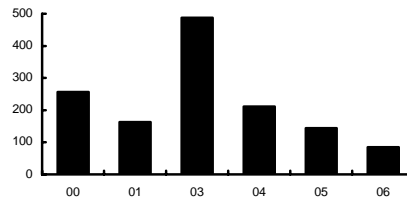
Nursing 795	Applied Drug Therapy	19
Nursing 809	Primary Care II	21
<b>Total</b>		<b>40</b>

**Year Total 85**

Number of Courses per Year



Number of Participants per Year



## TELENET 2

(3 COURSES, 4 STUDENTS)

LIST OF COURSES, INSTRUCTORS, ORIGINATING INSTITUTIONS\*,  
AND ENROLLMENTS BY SEMESTER

Course Name	Instructor	University	# of Students
Summer 2005			
<b>No courses were offered in Summer 2005</b>			
<hr/>			
<b>Total</b>			
Fall 2005			
Issues in Adult Education	Charles Oaklief	KSU	2
Grant Writing	S. Maes & D.Reinert	KSU	1
<hr/>			
<b>Total</b>			<b>3</b>
Spring 2006			
Roles and Functions in College Teaching	Charles Oaklief	KSU	1
<hr/>			
<b>Total</b>			<b>1</b>
<b>Year Total</b>			<b>4</b>

\*The credit hours generated through these courses accrue to the originating institutions (KSU). WSU's Media Resources Center provides video reception and coordination services for the benefit of Wichita area students.

# NEW MEDIA

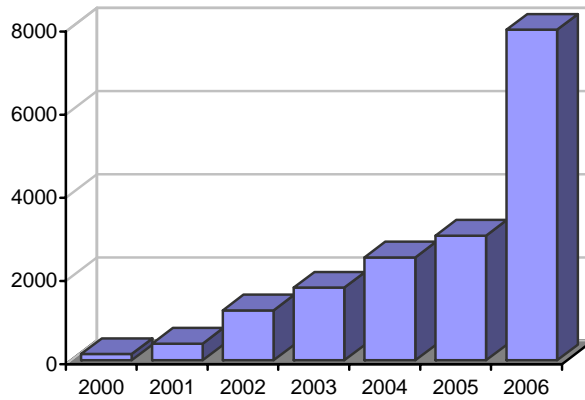
BLACKBOARD ACTIVE USERS SUPPORTED IN FY2005 – 17818 Users\*

BLACKBOARD COURSES SUPPORTED – 7949 Courses\*\*

BLACKBOARD ORGANIZATIONS/GROUPS SUPPORTED – 170\*\*\*

<b>College</b>	<b>Number of Courses</b>
College of Business	851
College of Education	1252
College of Engineering	667
College of Fine Arts	1130
College of Health Professions	633
College of Liberal Arts & Sciences	3416
Honors	21
<b>Grand Total:</b>	<b>7949</b>

Number of Blackboard Courses



\*Number reflects both instructor and student users.

\*\*Not all courses are currently active.

\*\*\*Reflects the number of groups supported since 2004

## **Tegrity Multimedia Sessions Supported**

*Number of Active Streaming Sessions* 75

## **Faculty FrontPage Accounts Supported**

*Number of Course and Faculty Webs* 10

## **Server software upgrades**

ScheduAll

Minor Updates

Blackboard

Major Update to Blackboard 7 Learning Management System

Allegiance

Major Update

## **Custom Programming/Development**

Programmed Interactive Kiosks for Welcome Center

Developed Visual Student Roster Blackboard Building Block

## **Activity Requests**

CD-ROM duplication	1658 units/25 clients
DVD Duplication	1329 units/23 clients
Flatbed and Slide Scanning	5 clients/projects
CD-ROM Production	1 clients/projects
Training (One on One)	14 sessions
Training (Group)	2 sessions
PowerPoint development	3 clients/projects
Digital video capture	1 projects/clients

## Training and Development

Workshop Title	Presenter	Date	Enrollees	Attended
Faculty Workshop – Teaching Online	Julie Bath	7/7/2005	13	7
Blackboard Orientation	Julie Bath	8/5/2005	8	6
Blackboard Orientation	Julie Bath	8/8/2005	6	4
Blackboard Orientation	Julie Bath	8/9/2005	10	8
Blackboard Orientation	Julie Bath	8/12/2005	4	3
Blackboard Orientation	Julie Bath	8/12/2005	11	10
Blackboard Assessment Tools	Julie Bath	8/12/2005	2	1
Blackboard Communication Tools	Julie Bath	8/12/2005	2	1
Blackboard Orientation	Julie Bath	8/18/2005	5	4
Blackboard Communication Tools	Julie Bath	8/19/2005	5	5
Blackboard Assessment Tools	Julie Bath	8/19/2005	5	3
Blackboard Orientation	Julie Bath	8/19/2005	6	5
Blackboard Orientation	Julie Bath	8/23/2005	7	6
Blackboard Orientation	Julie Bath	8/25/2005	15	12
Windows XP Essentials	Peter Lundrigan	10/19/2005	6	2
Blackboard Essentials – Creating Safe Assignments	Julie Bath	10/20/2005	4	2
Blackboard Essentials – Creating Safe Assignments	Julie Bath	10/20/2005	5	4
File Management Essentials	Peter Lundrigan	10/21/2005	7	3
Scanning Essentials	Julie Bath	10/24/2005	7	7
PowerPoint for Classroom Essentials	Julie Bath	10/26/2005	12	9
Adobe Acrobat Essentials	Julie Bath	10/28/2005	15	11
FullShot Screen Capture Essentials	Julie Bath	10/31/2005	8	7
Blackboard Communication Tools	Julie Bath	11/1/2005	6	3
FullShot Screen Capture Essentials	Julie Bath	11/3/2005	11	7
Blackboard Assessment Tools	Julie Bath	11/4/2005	8	6
Digital Photo Manipulation – Beginners	Julie Bath	11/7/2005	12	11
Digital Photo Manipulation – Intermediate	Julie Bath	11/11/2005	14	9
Basic Webcam Training	Indika McCampbell	11/16/2005	9	6
Blackboard Essentials – Enhancing Your Class with Blackboard	Julie Bath	11/18/2005	14	9
Implementing Podcasting in the Classroom	Michael Gay	11/30/2005	10	10
Wikis, Blogs, Discussion, Groups, Blackboard™ And PowerPoint® Oh-My!	Julie Bath, Patrick Hutchinson, John Harrison, Indika McCampbell, Karen Reynolds	3/30/2006	40	40
Technology Update - Sedgwick County Clerks	Indika McCampbell	4/10/2006	35	35
			<b>TOTAL</b>	<b>256</b>

# SATELLITE CONFERENCES

(21 EVENTS, 1323 PARTICIPANTS)

## LIST OF CONFERENCES SUPPORTED

<b>Client</b>	<b>Date</b>	<b>Participants</b>
Educational Opportunity Center	9/27/2005	15
Hugo Wall School of Urban Studies	11/0/2005	10
Jason Project XVII	7/25/2005	1
Jason Project XVII	7/26/2005	1
Jason Project XVII	7/27/2005	1
Jason Project XVII	7/28/2005	1
Jason Project XVII	7/29/2005	28
Jason Project XVII	8/1/2005	1
Jason Project XVII	1/30/2006	100
Jason Project XVII	1/31/2006	289
Jason Project XVII	2/1/2006	165
Jason Project XVII	2/2/2006	235
Jason Project XVII	2/3/2006	186
Mid-Kansas Jewish Foundation	9/25/2005	60
Mid-Kansas Jewish Foundation	11/16/2005	48
Mid-Kansas Jewish Foundation	12/1/2005	70
Mid-Kansas Jewish Foundation	2/9/2006	20
Mid-Kansas Jewish Foundation	3/12/2006	19
Mid-Kansas Jewish Foundation	5/11/2006	43
TRIO Program	5/25/2006	20
Sedgwick County Department of Corrections	6/28/06	10
<b>Total</b>		<b>1323</b>

# VIDEOCONFERENCES

(167 EVENTS, 1959 PARTICIPANTS)

## LIST OF CONFERENCES SUPPORTED

<b>Client</b>	<b>Number of Events</b>	<b>Participants</b>
ALS Association	1	1
Candidate Quality Management	1	1
Client Logic	5	5
CPRFK - Developing a Benefits Specialist	3	30
CTI/MIVNET MEMBER	2	2
Derby Middle School	2	6
Engineering – Dean’s Office	2	40
Entrepreneurship	4	4
Global Learning Conference	1	75
Hugo Wall School of Urban and Public Affairs	1	1
Jason Project	5	88
Jones Institute for Educational Excellence	1	4
Kansas Department of Education	3	12
Kansas North Central Association	2	4
Kan-Ren	1	2
KU Medical School of Nursing	1	4
Liberal Arts and Science, English 101*	45	180
Megaconference	1	3
National Academic League	2	25
Niall Shanks	1	1
Nursing Department**	64	1296
Physical Therapy	1	32
Political Science	3	49
School of Music	3	8
School of Music – Concerts	1	1
Sociology	1	40
St. Francis University Physical Therapy Department	3	3
Telenet 2 – Register of Deeds	2	20
Telenet 2 – American Lung Association Program	1	10
Telenet 2 – Kansas Poets Shoptalk Series	1	2
Truesdell Middle School	1	3
Upward Bound Math Science Regional	1	4
Valley Center	1	3
<b>Total</b>	<b>167</b>	<b>1959</b>

\*This represents 1 LAS IDL class meeting three times per week over the spring semester.

\*\*This represents 4 Nursing IDL classes meeting weekly over two semesters.

## AUDIO CONFERENCES

(4 EVENTS, 54 PARTICIPANTS)

LIST OF CONFERENCES SUPPORTED

<b>Client</b>	<b>Number of Events</b>	<b>Participants</b>
JASON Project – Immersion Program	1	28
MRC Cable TV Services	2	6
Political Science	1	20
<b>Total</b>	<b>4</b>	<b>54</b>

## WEB CONFERENCES

(7 EVENTS, 50 PARTICIPANTS)

LIST OF CONFERENCES SUPPORTED

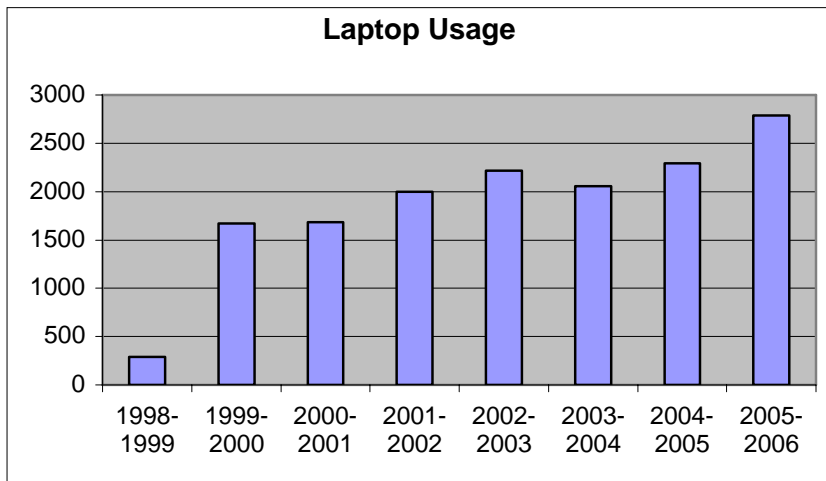
	<b>Number of Events</b>	<b>Participants</b>
Center for Teaching and Research Excellence	1	12
MRC Computing and Web Development – Tegrity Webinar	1	3
MRC Computing and Web Development – VCall Demo	1	9
MRC Video Services – Isilon Webinar	1	7
Office of Research Administration	2	4
WIN/Technology Enhancement	1	15
<b>Total</b>	<b>7</b>	<b>50</b>

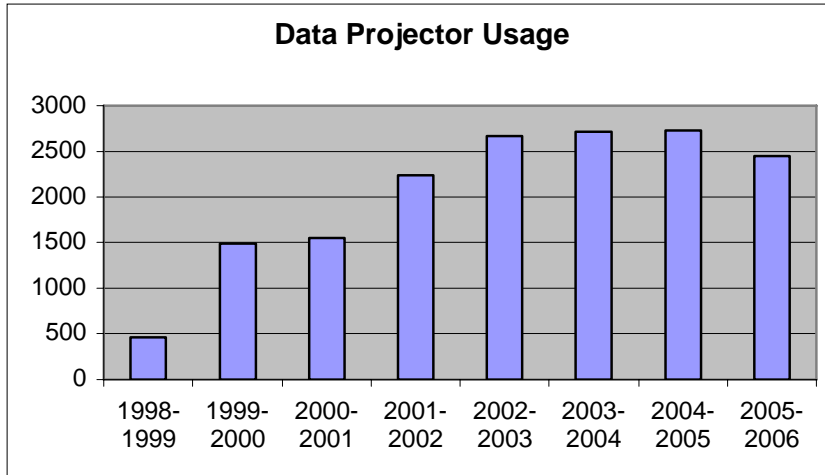
# CAMPUS MEDIA SERVICES

## CIRCULATION EQUIPMENT USAGE:

(NUMBER OF USAGES PER TYPE OF EQUIPMENT)

TV	455
VHS	462
Camcorder	131
35mm (slide projector)	168
Overhead projector	72
Microphone	298
Sound system, amp, mixer, & powered speakers	280
Music system, multi media speakers and CD/Cassette player	143
Portable tripod screen	289
Data Projector	2,452
Laptop computer	2,785





Because we added 14 Projector Rooms, projector setups were down by 279. Our laptop setups were up by 483, and we did 1,117 laptop setups in projector rooms. We do not have figures on projector room useage by faculty with their own laptops.

**MRC Film /Video Library usage:**

	2002-2003	2003-2004	2004-2005	2005-2006
16mm film	0	2	0	0
VHS	129	141	115	91
3/4"	0	1	2	2
Laser	0	0	0	1
DVD	17	17	21	57

**Student hours of employment:** 12,551

**Major on-campus events:**

- CMD Accounting & Auditing Conference
- Midwest Criminal Institute Programs
- McNair Scholars Program
- Watkins Lecture Series
- Jason Project
- Kansas BEST kickoff
- Kansas Association of Homes & Services for the Aging
- WSU National Advisory Council
- Global Learning Conference
- Kansas Kids Gear Up

**Major off-campus events:**

William Inge Festival

Economic Outlook Breakfast

Student Ambassador Club Awards Banquet

Family Business Forum – Entrepreneurship

Center for Management Development Events

Allumni Association Events

World Trade Council

City Clerks of Kansas Conference

Kansas School Nurse Association

**New projector-plus classrooms completed:**

Ahlberg Hall 208 & 214

Heskett Center 208

Hubbard Hall 219, 220, 229, & 230

Lindquist Hall 104

McKinley Hall 105, 108, 218, & 227

Neff Hall 209, & 211

## MRC'S PURCHASE OF CAPITAL EQUIPMENT, FY 2005-2006

### \$1/\$1 TECHNOLOGY FEE

As in previous years, students paid \$1.00 per credit hour, and the state matched with \$1.00 per credit hour, to create a technology fund. The MRC used its allocation to (1) install digital projection and audio reinforcement in nine classrooms, (2) replace digital projectors in two lecture halls, (3) purchase a digital video server for Studio B broadcasts, (4) replace laptop computers in the Wireless Learning Space, (5) license Tegrity software for three years, and (6) begin testing podcasting equipment.

DATE	BLDG-RM	VENDOR	ITEM	AMT BID
2/15/2006	Hubbard 209	Mission Electronics	Replacement projector screen	\$ 2,203.50
2/21/2006	MRC 171 (Wireless)	Microtech Computers	(5) laptop computers	\$ 9,084.55
2/21/2006	MRC 171 (Wireless)	Tiger Direct	Multiple PC manager	\$ 234.44
2/23/2006	MRC 159 (Studio B)	Electronic Video Systems	10" dual color monitor	\$ 2,015.00
3/09/2006	MRC 159 (Studio B)	Audio Visual Inc.	Audio/video server for Studio B broadcast	\$ 11,950.00
3/16/2006	MRC 159 (Studio B)	Electronic Video Systems	17" LCD mounted monitor	\$ 2,350.00
3/09/2006	Jabara 127 & 128	Mission Electronics	(2) data projector replacements	\$ 9,705.00
4/03/2006		Senna Tech Systems	LSI00 security device for projector	\$ 158.00
4/03/2006	Jabara 127 & 128	Mission Electronics	Convert data projector controllers from serial to infrared	\$ 400.00
4/03/2006	Jabara 127 & 128	UCATS	Labor to pull wire and install network	\$ 160.00
4/03/2006	Blake Hall	Tiger Direct; Dell; OMT; zZounds	Hardware and software for audio editing	\$ 1,890.87
4/06/2006	Campus	Senna Tech Systems	(2) data projectors for general circulation	\$ 3,898.00
4/20/2006		AVES Audio Visual	Elmo digital presenter	\$ 1,833.50
4/14/2006	Lindquist 112 McKinley 106, 107, 207 Neff 219	Senna Tech Systems	(5) Data projectors	\$ 18,828.00
4/14/2006	See 5 rooms above	UCATS	Labor to install 5 Ethernet ports	\$ 400.00
4/24/2006	Campus	Tegrity	36 months of upgrade and support for Tegrity software	\$ 3,760.00
5/15/2006	Campus	Senna Tech Systems	(5) projection carts	\$ 550.00
5/15/2006	Campus	Comprotec	Sonic shock security alarms	\$ 445.00
5/15/2006	Campus	Stanion Wholesale	Wiremold raceway, fittings & boxes	\$ 518.52
5/15/2006	See 5 rooms above	Physical Plant	Labor to install 4-plex outlets	\$ 1,000.00
5/18/2006	MRC 171	Discount Office Supplies	Sanyo digital audio recorder	\$ 229.57
5/18/2006	MRC 171	CDW-G	iPods and audio recorder	\$ 1,149.37

7/07/2006	Duerksen B-101 Elliott 109 & 110 Hubbard 327	Senna Tech Systems	(4) data projectors	\$ 16,688.00
6/08/2006	See 4 rooms above	UCATS	Labor to install 4 Ethernet ports	\$ 320.00
6/07/2006	See 4 rooms above	Comprotec	(4) Sonic shock security alarms	\$ 324.00
6/08/2006	See 4 rooms above	Physical Plant	Labor to install (4) 4-plex outlets	\$ 800.00
6/22/2006	Campus	Bitlogix Software LLC	Software upgrade to 50 devices to provide remote monitoring of classroom data projectors	\$ 1,179.00
6/22/2006		Senna Tech Systems	(2) Panasonic LB-60U data projectors	\$ 2867.00
			<b>TOTAL</b>	<b>\$ 94,941.32</b>

## RESERVE FUNDS

The Media Resources Center used reserve funds to purchase a national feed of news and weather information for the Campus Information Channel. Non-state funds were also used to renew software licenses and maintenance agreements.

<b>Date</b>	<b>Item Description</b>	<b>Vendor Name</b>	<b>Amount</b>
12/5/2005	News feed for Campus Information Channel	Digi Signs, Inc.	\$ 17,786.75
10/24/2005	Adobe Software & License	Software House Internat'l	\$ 3,620.00
1/5/2006	Maintenance Contract for ScheduAll	VizuAll, Inc	\$ 4,230.00
7/29/2005	Support Agreement on Color Xerox Printer	Xerox Corp.	\$ 1,249.00
11/29/2005	CD/DVD Z6 Signature Printer	Master Recording Supply	\$ 1,109.00
		<b>TOTAL</b>	<b>\$ 27,994.75</b>

## VIDEO SERVICES

<u>CLIENT</u>	<u>Project Title</u>
<b>Academic Affairs</b>	<b>Commencement, Spring 2006</b> Provided video support, recorded, duplicated Provided video to Internet stream
	<b>Commencement, Fall 2005</b> Authored, duplicated commencement DVD
<b>Alumni Association</b>	<b>2005 Alumni Awards</b> Produced individual honoree vignettes
	<b>Alumni Breakfast Series</b> Recorded, duplicated presentations
<b>Business, Barton School</b>	<b>James P. Schwartz Memorial Video</b> Produced video
	<b>James P. Schwartz Memorial Lecture</b> Recorded, duplicated lecture
	<b>International Business Forum</b> Recorded, duplicated 5/19/06 forum
<b>Digital Brand Communications</b>	<b>Transfer footage</b> DVCPRO 50 format to hard drive
	<b>Purchase campus video footage</b> High Definition campus footage
	<b>Studio rental</b> Rented Studio B space
<b>Center for Economic Development</b>	<b>2005 Economic Outlook Conference</b> Provided video support Produced sponsorship video Recorded, duplicated conference video
<b>Education, Kansas Kids @ GEAR UP</b>	<b>Kansas Kids @ GEAR UP</b> Produced, duplicated information video
<b>Entrepreneurship</b>	<b>Kansas Family Business Forum</b> Recorded, duplicated 2/02/06 forum
<b>Fine Arts, College of</b>	<b>Artscape: 2005</b> Produced commercial advertising spot
<b>Foundation</b>	<b>We Are Wichita State Campaign</b> Recorded campaign press conference Edited, duplicated conference footage Encoded for web use

<b>Global Learning Conference</b>	<b>Global Learning Conference 2005</b> Provided video support Recorded, duplicated presentations Authored conference DVD
<b>Independence Community College</b>	<b>William Inge Theatre Festival 2006</b> Recorded, edited 25 <sup>th</sup> Anniversary video inserts  <b>25<sup>th</sup> Anniversary Tribute show</b> Edited multi-camera tribute show Produced elements for DVD authoring  <b>The Drama of Creation: Writers on Writing</b> Edited  <b>William Inge Collection: A Digital Archive II</b> Edited collection footage Encoded video clips for Website  <b>American Playwrights: A Digital Archive</b> Duplication to digital tape
<b>Intake Studio</b>	<b>Raytheon: Performance Promise</b> Edited
<b>Kansas BEST</b>	<b>Kansa BEST 2005: Mission to Hubble</b> Produced informational / recruitment video  <b>Kansas BEST 2005 kickoff day</b> Provided video support Recorded, duplicated game presentation
<b>Kansas Council On Economic Education</b>	<b>Jill Docking presentation</b> Recorded, duplicated 6/27/06 presentation
<b>Liberal Arts &amp; Sciences</b>	<b>A New Adventure</b> Produced LAS information / recruitment video
<b>Liberal Arts Advising Center</b>	<b>LAS, Faculty Expectations</b> Produced, duplicated informational video
<b>Maize High School</b>	<b>2006 Senior High School graduation</b> Recorded, duplicated graduation ceremony
<b>McNair Scholar Program</b>	<b>2005 Closing Symposium</b> Recorded, duplicated symposium presentations
<b>Music, School of</b>	<b>Concert Band, Symphonic Wind &amp; Symphony Concerts</b> Oct 11; Dec 6; Dec 8; Mar 14; May 8 Recorded, duplicated
<b>NIAR, CECAM</b>	<b>FAA Composites Workshop</b> Duplicated DV video to DVD
<b>Performing Arts, School of</b>	<b>Dance Department</b> Duplicated dance presentations

<b>Police, WSU</b>	<b>Investigation images</b> Created JPEG stills, captured from surveillance video
<b>Pulse Systems Inc.</b>	<b>Pulse Systems Inc. EHR sessions</b> Recorded, duplicated
<b>Rhatigan Student Center, Bowling</b>	<b>2005 Bowling Ball Giveaway</b> Produced, duplicated promotional video
	<b>Meet the Coaches</b> Produced presentation video
<b>Spirit Squad</b>	<b>Spirit Squad</b> Edited 2005 fall national qualifying video
<b>Student Support Services</b>	<b>2006 Recognition Banquet</b> Recorded, duplicated banquet video
<b>United Way, Gardner Design</b>	<b>United Way campaign spots</b> Color Correction, transfer, duplication
<b>Wichita Community Children's Choir</b>	<b>2006 Spring Concert</b> Recorded, duplicated concert
<b>WSU TV</b>	<b>ON CAMPUS</b> Produced TABOR Debate #051129 Produced Schwartz Lecture #051207 Produced Economic Outlook Conference # 051208 Produced Wichita Lyceum #060404
	<b>Campus Exposure</b> Student Produced Campus spots

<b>Billed hours: Video acquisition recording</b>	<b>131.85</b>
<b>Billed hours: Edit Bays (4)</b>	<b>843.35</b>
<b>Billed minutes: DVD record</b>	<b>7,536.48</b>
<b>Billed units: DVD setup</b>	<b>70.75</b>
<b>Billed minutes: Video duplication, tape to tape</b>	<b>7,909.71</b>

# ENGINEERING SERVICES

**NUMBER OF ITEMS REPAIRED      171**

MRC Engineering Services provides repairs to broadcast and consumer type equipment used at the MRC and other campus departments. Examples of items repaired are: VCRs, television sets, video projectors, overhead projectors, 35mm slide projectors, broadcast and consumer cameras, video switching and transmission equipment, audio amplifiers and mixers, codecs used for compressed video transmission and satellite reception equipment.

**MAJOR REPAIRS      9**

Examples of major repairs are repairs to Library Film readers and video projectors that are used to support for-credit classes

**REMODELS      34**

Examples of remodels include:  
Installation of a Video Server in MRC Cable Control to automate playback of for-credit Telecourses on Wichita Cable channel 13. Replacing the microphones in the MRC ITV room and replacing speakers and audio amplifiers in MRC Cable Control and Master Control.

**INSTALLATIONS      158**

Installations include 25 separate jobs in the new Welcome Center plus many hours in the design, purchase and managing contractor crews during installation of the Multimedia equipment in the Welcome Center. We installed 11 CATV outlets in 2 buildings.

**CATV INSTALLS      19**

Ahlberg	2
Brennan Hall	1
Clinton Hall	2
Duerkson	1
Engineering	1
Grace Wilke	2
Wilkins Stadium	2
Morrison	1
Self Help Network	2
Wallace Hall	1
WSEC	4

## ENGINEERING PROJECT SCHEDULE 2006

Location	Repaired Items	Major Repairs	Remodels	Installations
Ablah Library	8		1	
Ahlberg	4		1	2
Clinton Hall				2
Devlin Hall	1			
Duerkson FC	2			1
Eck Stadium	5			2
Elliot School	4		1	3
Engineering School				1
Fairmount Hall	1			1
Grace Wilke Annex				2
Heskett Center				1
History Dept	1			
Industrial Engineering	1			1
Jabbara Hall			1	
Kock Arena	7			7
Metroplex	1			
Morrison			1	1
MRC Building	4		1	
MRC Ch 13	5	3	2	1
MRC CIC	8		1	1
MRC CMS	30		1	
MRC IT	4		7	5
MRC ITV	3	1	3	16
MRC Master	7		6	27
MRC Shop	2		2	17
MRC Studio B	10		3	11
MRC Truck	16	2	1	3
MRC TV Services	23	1		5
Off campus	7	1		
Printing				1
RSC/CAC	2			11
Self Help Network				
Ulrich Museum	2		1	1
Wallace Hall				1
Welcome Center	12	1		25
Wilkins Stadium				2
WSEC	1		1	5
<b>Total</b>	<b>171</b>	<b>9</b>	<b>34</b>	<b>158</b>

# ADMINISTRATION

	FY2003	FY2004	FY2005	FY2006
Invoices Prepared**	1,034	1,111	979	856
Phone Calls Received	4,505	4,107	3,919	3,578
Purchase Orders Processed	272	260	192	183
Procurement Card Transactions Processed	348	260	254	244

99 telecourse/deposit clients put on 27 invoices  
 \*\*3 invoices for Telecourses rented for each semester

Interfund Transactions Processed	459
Foundation Transactions Processed	21
Petty Cash Transactions Processed	32

### Inventory (items valued over \$2,000)

Total Number of Items	143
Value of Inventory (as listed on Controller's Report)	\$1,547,380

### Budget Summary

GU Salaries & Benefits	\$1,117,831
RU Salaries & Benefits	\$ 69,285
GU Student Salaries & Benefits	\$ 90,602
RU Student Salaries & Benefits	\$ 43,445
GU OOE	\$ 86,531
RU OOE (minus RU capital purchases)	\$ 132,010
RU Capital Purchases	\$ 27,995
\$1/\$1 Tech. Fund Purchases	\$ 94,941

### Totals

GU Budget (84%)	\$1,294,964
RU Budget (16%) (minus capital)	\$ 244,740
Total Budget	\$1,539,704

Expenditure	FY2003	FY2004	FY2005	FY2006
GU Salaries & Benefits	\$993,824	\$1,036,398	\$1,033,325	\$1,117,831
RU Salaries & Benefits	\$73,137	\$66,275	\$51,925	\$69,285
GU Student Salaries & Benefits	\$108,351	\$95,448	\$95,448	\$90,602
RU Student Salaries & Benefits	\$34,462	\$23,945	\$29,300	\$43,445
GU OOE	\$107,947	\$102,847	\$102,587	\$86,531
RU OOE	\$104,782	\$174,400	\$160,700	\$122,347
Total GU Budget	\$1,210,122	\$1,234,693	\$1,231,360	\$1,294,964
Total RU Budget	\$248,381	\$264,620	\$241,925	\$244,740
<b>Total Budget</b>	<b>\$1,458,503</b>	<b>\$1,499,313</b>	<b>\$1,473,285</b>	<b>\$1,539,704</b>

# KMUW RADIO

## Hours of Broadcast Programming

News – 5668  
Music – 2312  
Other – 780  
Local, per week – 24/National, per week – 144 (7/05-12/05)  
Local, per week – 25/National, per week – 143 (1/06-6/06)  
Local, annual – 1252/National, annual – 7486  
Total – 8760

## Hours per week devoted to various music styles

10 – Classical  
17 – Folk/AAA/World (15 as of 1/1/06)  
15 – Jazz (17 as of 1/1/06)  
2 – Gospel

## Program Schedule

Refer to monthly newsletters for July '05 through June '06

## National Programming

### New Programs Acquired

Distributed by NPR – Repeats of Wait, Wait Don't Tell Me!, Jazzset and Piano Jazz added in Jan 06  
Distributed by PRI – none  
Distributed by Independent Producers – Unfinished Journey: The Lewis and Clark Expedition, from Oregon Public Broadcasting  
Distributed from APM – Splendid Table

### Cultural Programming Specials

A Day in the Life on Capitol Hill  
Humankind: Relaxed Focus with David Allen  
Living Well: Dangers of Bovine Growth Hormone  
John Roberts Supreme Court Confirmation Hearings  
While the World Watched  
The Splendid Table: Turkey Confidential  
Over the River and Through the Woods  
A Feast for the Ears  
Advent – A Cultural Journey (4 half-hour specials)  
The 12 Classical CDs of Christmas 2005  
Retracing the Road to Freedom: The 50<sup>th</sup> Anniversary of the Montgomery Bus Boycott  
Carols for Dancing  
Bach's Christmas Oratorio (repeated once)  
Carols for Christmas  
Music of the Baroque Christmas Special  
Christmas from Washington with the Choral Arts Society  
St. Olaf Christmas Festival 2005  
Christmas with Cantus 2005  
Valparaiso University Christmas Concert  
A Great Miracle Happened There  
Welcome Christmas  
Concordia College Christmas Concert 2005

A Taste of Chanukah  
 Christmas with the Philadelphia Singers 2005  
 Gloria!  
 Chanukah in Story and Song  
 Season's Griot  
 The Spirit of Christmas  
 Heinrich Schutz: A History of Christ  
 The Christmas Revels: A Celebration of the Winter Solstice 2005  
 A Prairie Home Companion New Year's Eve Live Special  
 Intelligent Designs on Evolution  
 Samuel Alito Supreme Court Confirmation Hearings  
 Sebelius State of the State Address  
 Bush State of the Union Address  
 Rediscovering Barbara Jordan  
 The Undiscovered Exploring: Imagining York  
 Ruth Bell Graham: A Pilgrim Journey  
 Families at War  
 Tales From Urban Forests (3-part special)  
 Unfinished Journey: The Louis and Clark Expedition (13-part series)

### **Local Programming Production**

#### **New Settlers' Radio Hour**

16 – new concerts recorded (10 OSI, 1 Orpheum, 1 Botanica, 4 Zoo)  
 11 – seasons completed  
 27 – shows produced, including 3 fundraising versions

#### **Intermission**

24 local performances  
 1 interview with Andrew Sewell  
 2 pieces by WSU composers (Walter Mays, Dean Roush)  
 8-25-05 Walter Mays – Adagio from Quartet for Strings; Pro Arte String Quartet – Albany TROY569  
 10-10-05 Joseph Haydn – String Quartet in D, Op. 50, NO. 6 “The Frog”; Fairmount String Quartet – October 2003. Zoltan Kodaly – Evening; Dean Roush – 3 Flowersongs; WSU Concert Chorale – November 2002  
 10-14-05 INTERVIEW WITH ANDREW SEWELL  
 Paul Dukas – Villanelle ; Amy Jo Rhine, horn – November 7, 1999  
 10-19-05 Maurice Ravel – “Anime” from Sonatine; Amy Goeser Kolb, Oboe; Laura Kennedy, piano – February 9, 2003  
 10-20-05 George Frederic Handel – Two Arias; Wichita Brass Quintet – February 1, 2000  
 10-24-05 Luigi Boccherini – Quintetto 5 in D MVT 4, Andantino; Mathew Daniels, guitar; Esther Noh, violin; Chelley Graes, violin; Catherine Consiglio, viola; Andrew Kolb, cello – Plymouth Chamber Series “Music for Guitar and Strings” – January 11, 2004  
 10-27-05 Ottorino Respighi – Botticelli Triptych; WSU Symphony Orchestra – May 2004  
 10-28-05 Sergei Rachmaninov – Sonata, Op. 19; Catherine Consiglio, viola; Laura Kennedy, piano – February 2, 2003  
 11-25-2005 Randall Thompson – Alleluia; Johannes Brahms – Five Songs, Op. 104; WSU Chamber Chorale – November 21, 2002  
 12-7-2005 Ludwig Van Beethoven – Grosse Fugue; Fairmount String Quartet – February 10, 2002  
 1-16-2006 Joseph Gabriel Rheinberger – Suite (Concerto) Op. 149; Nancy Luttrell, violin; Andrew Kolb, cello; Alan Malaby, Organ – Plymouth Chamber Series “Chamber Music for Organ and Instruments” – April 6, 2003  
 2-24-2006 Maurice Ravel – String Quartet in F; Fairmount String Quartet – October 16, 2003  
 2-28-2006 Antonio Vivaldi – Concerto in C for piccolo and strings; Lorraine Carlson-Miller, piccolo; Plymouth Chamber Orchestra – February 9, 2003

- 3-6-2006 Joseph Haydn – Mass in d minor; Michelle Pankratz, soprano; Debra Baxter, mezzo-soprano; Michael J. Cochran, tenor; George Gibson, bass-baritone; WSU choirs and orchestra – April 15, 2002
- 3-8-2006 Antonin Dvorak – Piano Quintet in A; Fairmount String Quartet (Esther Noh, violin; Nancy Luttrell, violin; Catherine Consiglio, viola; Andrew Kolb, cello) Julie Bees, piano, Chamber Music at the Barn – Summer 2004
- 3-17-2006 Eric Ewazen – Frost Fire; Wichita Brass Quintet – February 1, 2000
- 3-20-2006 F.G. Handel – Two Arias; Wichita Brass Quintet – February 1, 2000
- 3-22-2006 Joseph Haydn – London Trio NO. 1 in C: Andante, Vivace; Fran Shelly, flute; Nancy Luttrell, violin; David Schepps, cello. Maurice Durufle – Prelude, Recitatif et Variations; Fran Shelly, flute; Catherine Consiglio, viola; Camille Burrow, cello. Franz Schubert – Quartet for guitar, flute, viola and cello; Ernesto Tomayo, guitar; Fran Shelly, flute; Catherine Consiglio, viola; Camille Burrow, cello – Chamber Music at the Barn – Summer 1998
- 3-24-2006 Johannes Brahms – Horn Trio in E-flat, Op. 40; Laura Kennedy, piano; Amy Glidden, violin; Nick Smith, horn, Chamber Music at the Barn – Summer 2003

#### Moonglow with Gaston

- 52 programs produced
- 26 guest artists interviewed
- 13 new music review and critique programs with Chris Shull
- 13 themed music specials

#### Jazz Café

- 260 programs produced
- 25 guest artists interviewed

#### Local News Projects

Live & Learn Lecture series 2005-2006 – produced ten in-depth news feature reports; ten newsmaker interviews; 30 promotional spots; audio from news reports and KU School of Medicine lectures archived on KMUW website. The project was an extension of the Sound Partners for Community Health collaboration from FY 2004, and the Joseph C. Meek Live & Learn Lecture Series from FY 2005.

#### National Broadcasts of Local Stories

- April 3, 2006: National Public Radio (Morning Edition) - WSU Airline Quality Report. Carla Eckels, news story.
- June 30, 2006: National Public Radio (All Things Considered) - Last Day of School feature. Carla Eckels, component of news feature.
- In-depth feature stories produced by KMUW for local broadcast are listed below, following News Programming & Story Production details.

#### News Programming and Story Production Count

JUL-SEP, 2005 - 321 total stories, including the following major categories

- 6 – Arts
- 29 – Community
- 48 – Crime/Prisons/Courts
- 54 – Education
- 19 – Environment/Agriculture/Weather
- 46 – Financial/Taxes/Business/Economy
- 80 – Government/Legislation
- 19 – Health
- 11 – Military
- 8 – Politics
- 1 – Transportation

OCT-DEC, 2005 - 278 total stories, including the following major categories

- 3 – Arts
- 37 – Community
- 20 – Crime/Prisons/Courts
- 62 – Education
- 23 – Environment/Agriculture/Weather
- 26 – Financial/Taxes/Business/Economy
- 71 – Government/Legislation
- 25 – Health
- 2 – Military
- 9 – Politics
- 0 – Transportation

JAN-MAR, 2006 - 237 total stories, including the following major categories

- 5 – Arts
- 18 – Community
- 21 – Crime/Prisons/Courts
- 25 – Education
- 6 – Environment/Agriculture/Weather
- 14 – Financial/Taxes/Business/Economy
- 107 – Government/Legislation
- 27 – Health
- 0 – Military
- 9 – Politics
- 5 – Transportation

APR-JUN, 2006 - 233 total stories, including the following major categories

- 5 – Arts
- 9 – Community
- 38 – Crime/Prisons/Courts
- 23 – Education
- 10 – Environment/Agriculture/Weather
- 32 – Financial/Taxes/Business/Economy
- 63 – Government/Legislation
- 30 – Health
- 2 – Military
- 20 – Politics
- 1 – Transportation

#### In-depth Feature Stories

- Interview with Christy Levings, President, Kansas National Education Association on school finance legislation, 7-1-05.
- Interview with WSU Professor Niall Shanks on his upcoming work at WSU and the evolution debate, 8-4-05.
- Interview with Sandra Harrison of the National Conference for Community and Justice, Kansas, on its "Walk As One" event, 8-19-05.
- BTK Sentence Hearing short feature, 8-19-05.
- Interview with Mary Knecht of the League of Women Voters, Wichita Metro, on its year-long celebration of the anniversary of the 19<sup>th</sup> amendment, 8-25-05.
- Interview with Dr. Bob Beatty of Washburn University on his documentary, "The Kansas Governor," 9-1-05.
- Starlite Drive-In feature, 9-2-05.
- Live & Learn Lecture interview with Dr. Joseph C. Meek on "The Thyroid: Recognizing When It Goes Awry, Part 2," 9-12-05.
- Live & Learn Lecture feature with Dr. Joseph C. Meek on "The Thyroid: Recognizing When It Goes Awry, Part 2," 9-13-05.

Interview with Rep. Melody Miller on Family Strengthening Conference Series, 9-15-05.  
 Audio Postcard from Hurricane Katrina Evacuee Bonita Franklin relocated to Wichita from flooded New Orleans, 9-16-05.  
 Interview with environmentalist Nathan Small on oil and gas drilling in grasslands, 9-30-05.  
 Live & Learn Lecture interview with Dr. Martha Householder on skin cancer, 10-10-05.  
 Live & Learn Lecture feature with Dr. Martha Householder on skin cancer, 10-11-05.  
 Interview with musician Suzy Bogguss, 10-12-05.  
 Interview with Andrew Sewell, Music Director of the Wichita Symphony Orchestra, 10-14-05.  
 Interview with journalist Eleanor Clift, 10-17-05.  
 Live & Learn Lecture interview with Dr. Tim Scanlan on prescription drug abuse, 11-7-05.  
 Interview with Award Winning Actress Marla Gibbs about career and playing the sassy maid in 1970's hit TV series, The Jefferson's 11-7-05.  
 Live & Learn Lecture feature with Dr. Tim Scanlan on prescription drug abuse, 11-8-05.  
 Interview with Wichita School Superintendent Winston Brooks, 11-9-05.  
 Interview with playwright Dean Corrin, 11-16-05.  
 Interview with Patrick Sciarratta on the UN's Friendship Ambassadors Foundation, 11-25-05.  
 Interview with Dr. Donna Sweet for All Things Considered on HIV/AIDS, 12-1-05.  
 Interview with Dr. Donna Sweet for Morning Edition on HIV/AIDS, 12-2-05.  
 Live & Learn Lecture interview with Dr. Scott Moser on ADHD, 12-12-05.  
 Live & Learn Lecture feature with Dr. Scott Moser on ADHD, 12-13-05.  
 Interview with Polly Basore, author of "What Heaven left Behind," 12-16-05.  
 Interview with Jim Grier of the Kansas Board of Regents, 1-3-06.  
 Live & Learn Lecture interview with Dr. Douglass Wooley on Growing Old Gracefully: Men's Health Issues, 1-9-06.  
 Live & Learn Lecture feature with Dr. Douglass Wooley on Growing Old Gracefully: Men's Health Issues, 1-10-06.  
 Interview with Rep. Brenda Landwehr on Taxpayers' Bill of Rights, 1-11-06.  
 Interview with Rep. Jim Ward on Taxpayers' Bill of Rights, 1-12-06.  
 Interview with WSU's John Harrison on CRATEL, 1-27-06.  
 Live & Learn Lecture interview with Dr. Salman Ashfaq on the Heart and Head, 2-13-06.  
 Live & Learn Lecture feature with Dr. Salman Ashfaq on the Heart and Head, 2-14-06.  
 Interview with State House Assistant Minority Leader, Rep. Jim Ward, 2-21-06.  
 Mammoth Tooth Restored feature, 2-24-06.  
 Interview with Peace Corps volunteer Beau Jackson, 3-1-06.  
 WSU National Trumpet Competition, 3-7-06.  
 Interview with Andrew Sewell, Music Director of the Wichita Symphony Orchestra, 3-9-06.  
 Live & Learn Lecture interview with Dr. Alex Reed on stress, 3-13-06.  
 Live & Learn Lecture feature with Dr. Alex Reed on stress, 3-14-06.  
 Interview with businessman and philanthropist, Fran Jabara, 3-20-06.  
 Interview with Mike Wood on his documentary "The Drama of Creation: Writers on Writing," 3-24-06.  
 Live & Learn Lecture interview with Dr. Deborah Outwater "Growing Old Gracefully: Women's Health Issues," 4-10-06.  
 Live & Learn Lecture feature with Dr. Deborah Outwater "Growing Old Gracefully: Women's Health Issues," 4-11-06.  
 Interview with James W. Johnson on the Ulrich's Semina Culture exhibit, 4-18-06.  
 Interview with Dr. Gary Cox on his book "Think Again: A Response to Fundamentalism's Claim on Christianity," 4-28-06.  
 Live & Learn Lecture interview with Dr. Thomas Rosenberg on allergies and asthma, 5-8-06.  
 Live & Learn Lecture feature with Dr. Thomas Rosenberg on allergies and asthma, 5-9-06.  
 Interview with Cessna's Roger Whyte at 30<sup>th</sup> Annual World Trade Week event at WSU, 5-19-06.  
 Governor's Selects Running Mate short feature, 6-01-06.  
 Live & Learn Lecture interview with Dr. Susan Carr on "You're Only As Old As You Feel," 6-12-06.  
 Live & Learn Lecture feature with Dr. Susan Carr on "You're Only As Old As You Feel," 6-13-06.

Interview with historians and filmmakers Ken Spurgeon and Jonathon Goering on Bleeding Kansas, 6-14-06.

Interview with Charles Shields, author of "Mockingbird," biography of Harper Lee, 6-21-06.

## Fundraising

KMUW raised over \$477,000 from listeners and underwriters

KMUW received almost \$43,000 worth of in-kind donations of materials and services

### On-air Activities

Fall 2005 November 11 – November 19, 2005

Pledged – \$157,400

Members – 1331

New – 282 (\$27,016)

Renewal – 570 (\$82,828)

Mailing – 480 (\$47,556)

Spring 2006 April 21 – April 29, 2006

Pledged – \$132,417

Members – 1096

New – 237 (\$25,422)

Renewal – 493 (\$68,749)

Mailing – 366 (\$38,246)

\*Spring 2006 Supplemental June 1, 2006 (includes totals from April 29 above)

Pledged – \$164,055

Members – 1369

New – 253 (\$27,182)

Renewal – 558 (\$7,706)

Mailing – 558 (\$59,167)

\*Since we came up short at the end of the April drive, we ran a spot campaign from April 30 – May 31, with an additional day of on-air drive on June 1, 2006.

Fall campaign was delayed due to considerations surrounding Hurricane Katrina.

Spring Campaign included a sweepstakes drawing for pre-drive participants and drive participants – each for an ETON portable radio.

### Off-air Activities

Corporation for Public Broadcasting – \$151,249 – Community Service Grant. The National Program and Production Acquisition Grant, previously a separate line item from CPB, is now included in the Community Service Grant, with the stipulation that a percentage of the CSG be spent on acquiring or producing national programs.

Kansas Public Broadcasting Council – \$100,670 – Service and Incentive Grant

The Department of Administration held back 40% at the start of FY 06 - \$61,053 was distributed. Another 30%, or \$30,526, was released in August 2005. A final 10% disbursement of \$9,091 was made in June 2006 for a total grant award of \$100,670.

WRRS Mini-Masters Golf Tournament, October 1, 2005

64 (16 four-person teams) competed at All Star Sports East

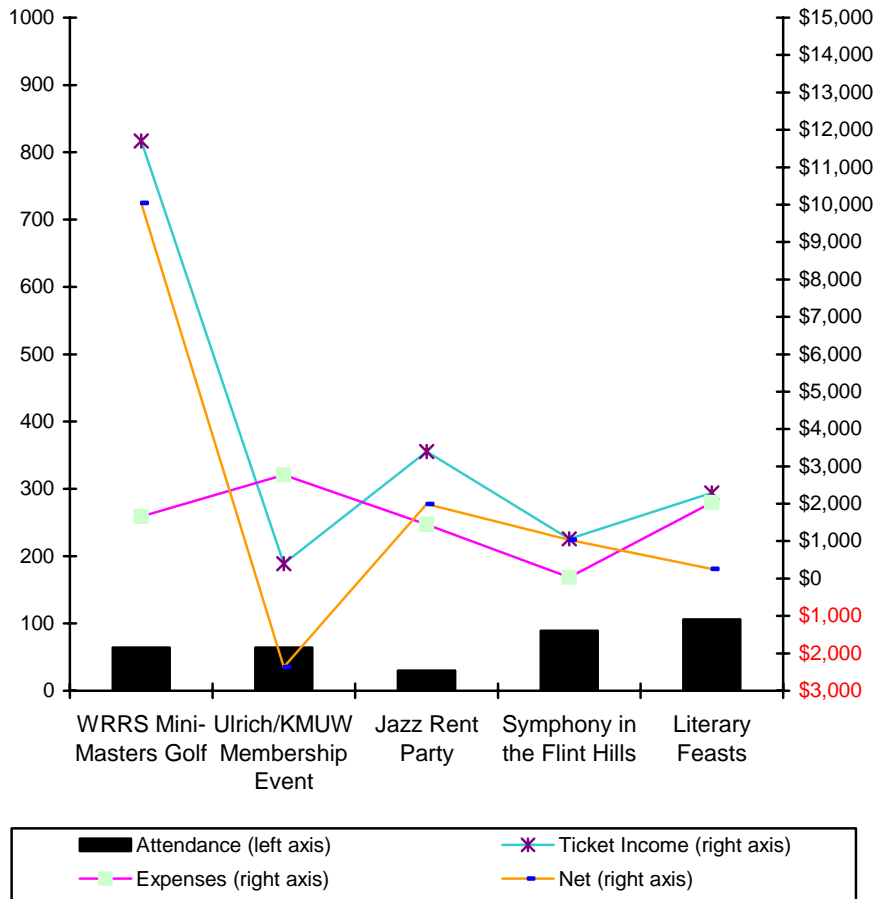
\$11,500 net income / \$14,500 in-kind prizes

WRRS Katherine Lyons Estate Gift Recognition Event, April 12, 2006

Honorary presentation of a plaque to Richard King, Esq., executor of the estate of Katherine Lyons. A specific bequest of \$10,000 and \$90,318.64 in residue was contributed to WRRS from the late Ms. Lyons estate. The gift was directed, in part, to establish a \$40,000 endowment for the Reading Service.

Vehicle Donations - \$708 – Three vehicles were donated through the Car Talk website, by individuals who designated the proceeds to benefit KMUW.

As shown in the following chart, KMUW experienced net income of \$10,963 from the events we produced in FY 2006. In FY 2005 we only produced two events, down from five in FY 2004. This was the fourth year for the WRRS Golf Event, and we almost doubled our net income. We produced a live concert – a Jazz Rent Party at Cabaret Old Town – as part of our Spring fundraiser. Several bands volunteered their time to perform in a marathon concert at Cabaret. A paid membership was the admission charge to this activity and we received some specific underwriting to help cover expenses. The Literary Feasts data reflect the period Aug-Dec 2005, when KMUW received \$5 per attendee. As of Jan 06, the station did not receive any revenue from the project, but the Feasts continued monthly through June, with 20-30 guests each time (max. capacity – 30). We heard many comments about our involvement in the community and many people expressed appreciation for these fundraising events as well as those for which we were media sponsors (see the list located below the chart). These sponsorships associate the station with a variety of programs, companies and institutions in the area, and are usually mentioned in printed materials and/or from the stage of the venues.



#### Other Station Projects

Media Sponsor for Chamber Music at the Barn Series, Summer 2005  
Media Sponsor for Botanica Concerts in the Gardens, Summer 2005  
Media Sponsor for Tuesdays on the Terrace: Social Irrigation at Botanica, Summer 2005  
Media Sponsor for Summer Concerts at the Sedgwick County Zoo, Summer 2005  
Media Sponsor for Music Theatre of Wichita, Summer 2005  
Media Sponsor for Old Cowtown Museum, Summer 2005  
Media Sponsor for WSU Connoisseur Series, 2005-2006 Season  
Media Sponsor for Wichita Guitar Society Classical Guitar Series, 2005-2006 Season  
Media Sponsor for Wichita Art Museum, 2005-2006 Season  
Media Sponsor for Edwin Ulrich Museum of Art at WSU, 2005-2006 Season  
Media Sponsor for Old Settler's Inn, 2005-2006 Season  
Media Sponsor for Fox Historic Theatre in Hutchinson, 2005-2006 Season  
Media Sponsor for Ballet Wichita Nutcracker, December 2005  
Media Sponsor for Old Cowtown Museum, Art and Antiques Fair, Summer 2005

#### Public Service Announcements Aired

KMUW aired 5-7 PSAs each day for a total of approximately 35-50 per week, or 2200-2500 per year. We tracked air times and dates while each PSA is in on-air rotation, but did not maintain an archive schedule for individual announcements. We air PSAs for WSU and the Greater Wichita community.

#### **Arbitron/Radio Research Consortium (RRC) Listener Estimates & AudiGraphics Reports**

##### Arbitron/RRC Top Line Data

AQH = Average Quarter Hour, the average number of listeners at any given time  
SHARE = Percentage share and ranking within the market  
CUME = Number of unduplicated (persons counted only once) listeners per week  
TSL = Time Spent Listening in hours per week

##### Spring 2005 (March 31 - June 22)

AQH	2,000
SHARE	2.8 – 15 <sup>th</sup> in the market
CUME	33,200
TSL	7.6 – 11 <sup>th</sup> in the market

##### Summer 2005 (June 30 - September 21)

AQH	1,900
SHARE	3.2 – 2-way tie for 12 <sup>th</sup> in the market
CUME	34,900
TSL	6.9 – 2-way tie for 11 <sup>th</sup> in the market

##### Fall 2005 (September 22 - December 14)

AQH	2,000
SHARE	2.7 – 16 <sup>th</sup> in the market
CUME	40,200
TSL	6.4 – 4-way tie for 11 <sup>th</sup> in the market

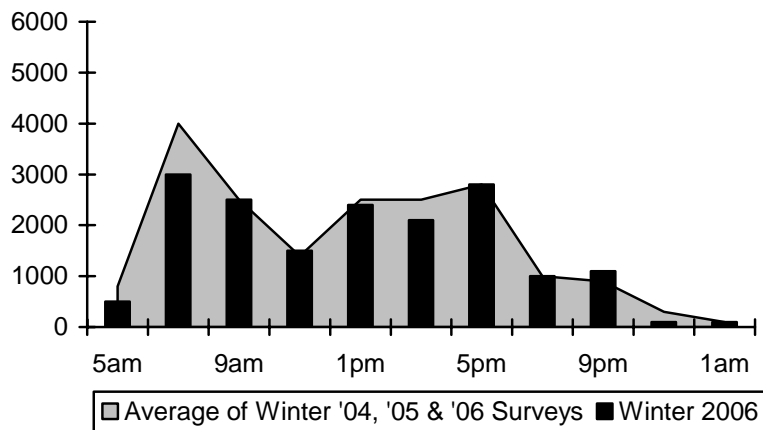
##### Winter 2006 (January 5 - March 29)

AQH	1,800
SHARE	3.0 – 2-way tie for 14 <sup>th</sup> in the market
CUME	27,500
TSL	8.2 – 3-way tie for 8 <sup>th</sup> in the market

WINTER 2006 METRO AREA MARKET SHARE

Station	Persons 12+ Share%
KFDI-FM	11.6
KZSN-FM	9.1
KDGS-FM	6.8
KRBB-FM	5.6
KEYN-FM	5.5
KFTI-AM	5.5
KICT-FM	5.3
KNSS-AM	5.3
KFXJ-FM	5.0
KFBZ-FM	4.1
KFH-FM	4.0
KTHR-FM	3.8
KZCH-FM	3.3
KSJM-FM	3.0
<b>KMUW-FM</b>	<b>3.0</b>
KMXW-FM	2.6
KTLI-FM	2.5
KHCC-FM	2.1
KYQQ-FM	1.7
KCFN-FM	1.0
KANR-FM	0.8
KSGI-FM	0.8
KYFW-FM	0.8
KYWA-FM	0.8
KGSO-FM	0.7
KQAM-AM	0.5
KCVW-FM	0.5

AVERAGE NUMBER OF LISTENERS PER HOUR



## AUDIGRAPHICS

LOYALTY = KMUW's listeners' use of the station as a percent of their radio use per week; a function of listener choice only while the radio is on.

CORE = Listeners who spend more time with KMUW than any other station

FRINGE = Listeners who spend more time with a competitor than KMUW

Spring 2005 (includes Winter 2005 data)

Loyalty of Total Audience - 40%

Loyalty of Core Audience - 74%

Loyalty of Fringe Audience - 15%

Fall 2005 (includes Summer 2005 data)

Loyalty of Total Audience - 39%

Loyalty of Core Audience - 69%

Loyalty of Fringe Audience - 16%

## Equipment Upgrades/Engineering & Operational Activities

ENCO Automation System operational as of May 2006

Installation of Transmission Line and Line dehydrator for Main Transmitter

Installation of ContentDepot Satellite Equipment

2 – IDC SFX2100 Series Satellite Receiver Appliance (file transfer receivers)

2 – IDC SR2000pro Series Satellite Audio Appliance (streaming decoders)

1 – 8-way L-band Splitter

System is receiving test files from NPR Distribution - Launch of the ContentDepot Portal and delivery of live audio and program audio files has been delayed until Fall 2006

Installation of Moseley SL9000T1/E1 Studio-to-Transmitter Link (STL) – Studio equipment, transmission lines and antennas on KMUW Monopole and KWCH Tower

Installation of six Pledge Drive Phones with headset/hands-free capability

Received transfer from MRC of Data Projector/Document Camera

Configured Canon Copier to serve as printer for specific station computers

Installation of Audio Logger Computer to capture off-air signal for airchecks, student training and content archiving, with funding from \$1/\$1 technology funds

Installation of central file server computer for production network; will make operational in FY 07

Installation of three new computers in the news area

Replaced the Chair in the Control Room

Repaired several DAT recorders and MiniDisc recorders

## WRRS (Wichita Radio Reading Service)

### Hours of Broadcast Programming

Total – 8736

Local, per week – 87/National, per week – 81

Local, annual – 4524/National, per week – 4212

### Program Schedule

Refer to WRRS Program Schedule

### Number of Receivers (Receiver Inventory)

508 Receivers currently on inventory

12 Receivers awaiting distribution

314 Receivers issued to individuals in their homes

92 Receivers issued to individuals in nursing homes

8 Receivers issued to medical centers (see list below)

14 Receivers issued to nursing homes (see list below)

1 Receiver issued to American Legion Post

3 Receivers issued for school use

8 Receivers issued for WRRS/KMUW business use

58 Receivers in disrepair/obsolete status (disposed of by facilities 3/2006)

### Medical Centers using WRRS audio services

Wesley Medical Center

Via Christi Regional Medical Center (St. Joseph) (2)

Envision (2)

Harry Hynes Hospice Services (2)

Vision Rehabilitation Center

### Nursing Homes with WRRS receivers

Larksfield Place (Wichita)

Georgetown Village (Wichita)

Masonic Towers (Wichita)

Catholic Care Center (Bel Aire)

Comfort Care Homes (Wichita)

Kansas Christian Home (Wichita)

Sedgwick Plaza (Wichita)

Cherry Creek Assisted Living (Wichita)

The Vyne (El Dorado)

Marion Manor (Marion)

Fairways of Augusta (Augusta)

The Timbers (Wichita)

Manor Care (Wichita and Goddard)

Restcare Life Choices (Wichita)

Cornerstone (Wichita)

Presbyterian Manor (Wichita)

Life Care Center (Halstead)

Prairie Homestead (Hesston)

### Senior Centers with WRRS receivers

Northeast Senior Center (Wichita)

Georgetown – Common Room (Wichita)

Masonic Home – Common Room (Wichita)

Catholic Care Center – Common Room (Bel Aire)

Number of Volunteer Readers/Time Donated to WRRS

61	Volunteers who worked over 10 hours to support WRRS operations
140	Most hours worked by a single Volunteer
158	Total volunteers used during the fiscal year (exclusive of Mini-Golf volunteers)
88	Hours volunteered for Speaker's Bureau presentations
60	"Regular Volunteers" who read on schedule each week
98	"Substitute Volunteers" who fill in and read on irregular schedule
256	Average volunteer hours worked each month at WRRS
3,072	Total annual volunteer hours (this total does not include volunteer hours worked for the Mini-Golf Tournament)

List of WRRS Development Board Members

The WRRS Advisory Board was renamed The WRRS Development Board in FY 2004. The Board comprises 18 active members and 3 honorary members. (some positions vacant)

Active Board Members as of June 30, 2006

Gerri Colgan  
Program Host KTQW-TV-53/WRRS Volunteer Reader  
President

June Holladay  
Community Resource  
Vice President

Melissa Crawford  
American Red Cross Transportation Dir.  
Secretary

Members/Affiliation

Beth Bower/Wichita Eagle Active Life Editor  
Angie Duntz/Sedgwick County  
Regina Henderson/Envision  
Randy Hughes/Great American Associates  
Carmen Hytche/WSU Communications Dir.-Spec. Events  
Dr. Eric Lamp/Optometrists  
Angie Prather/Marketing Manager, Wichita Clinic  
Amy Schafer/KU School of Medicine-Communications Coord  
Cindy Snider/Communications, Mennonite Church USA

Honorary Members

Tim R. Norton/Sedgwick County Commissioner

Grant Applications for FY 2006

Target Stores (pending)  
Kansas Lions (pending)  
Cessna Foundation (pending)  
Payless Foundation (pending)  
Raytheon Company (pending)  
Spirit Air (pending)  
Walgreen's Community Foundation (pending)  
Bank of America Foundation (pending)  
AT&T Foundation (pending)  
Phillips Petroleum (pending)  
Jiffy Lube (pending)

Community Contact for Volunteer Recruitment and Service Information  
WRRS 4th Annual Mini-Golf Masters Tournament – October 2005

Regular listings in Volunteer/Community sections of Wichita Eagle/Active Aging  
Booth at St. Anne Parish Health Fair – November 2005  
Booth at Envision Health Fair at Towne West Mall – March 2006  
14 Speaker's Bureau presentations to regional civic/senior/church groups  
250 Direct Information Letters sent to city wide home health care givers/organizations  
140 Direct Information Letters and Newsletter Release sent to area Civic Groups (regional  
Lions Clubs and others)  
21 Direct Information Letters sent to local Sorority/Frat. Organizations  
250 Direct Information Letters sent to city wide physicians and those dealing with  
sight related issues  
Listing on Internet site "Volunteer Match" for volunteer recruitment  
Coverage by 3 local television stations for Mini-Masters Golf and other events  
Coverage of Katherine Lyons Bequest and special volunteer spotlight in Wichita Eagle and  
other local papers/magazines  
New board member announcement in Business section of Wichita Eagle  
Presentation on local non-cable television network about WRRS—Mini-Golf  
Feature on WRRS in KMUW newsletter with forms for volunteers and receivers  
Additional information, application form and reading schedule posted on KMUW  
web site

### **Equipment Upgrades/Engineering & Operational Activities**

Upgrade to Maestro software system for programming and recording, including new  
software and audio card (completed October 2005)  
Cough buttons for recording studios  
New computer for coordinator's office  
30 New Receivers

# STAFF DEVELOPMENT

## CONFERENCES, WORKSHOPS AND TRAINING SEMINARS ATTENDED

### Tom Brock

CCUMC Annual Conference, Portland, OR – October 2005  
CCC 2006 – AHECTA Annual Conference, Nashville, TN – June 2006  
Economic Outlook Breakfast, Wichita, KS

### Jill Dizmang

Public Radio Development and Marketing Conference. Los Angeles, CA. July, 2005.  
ENCO Automation Training. KMUW. July, 2005.

### Carla Eckels

Guest Speaker, Wichita State University Admissions Multicultural Day. WSU. February, 2006.  
Kansas Office of Women in Higher Education, Investing in Women General Leadership Conference. WSU. April, 2006.

### Pat Hayes

Mail Seminar, Rhatigan Student Center, WSU. July, 2005.

### Kimberly D Jantz

Banner Training: Finance – Banner Requisitions – January 31 and February 1, 2006.  
Banner Training: Finance – Self Service Requisitions Approval - February 2.  
Banner Training: Finance – Requisitions and Approval Open Lab – February 3.

### Mark McCain

ENCO Automation Training. KMUW. July, 2005.  
Public Radio Program Directors Conference. St. Louis, MO. September, 2005.  
Product Study Participant, Software Usability Research Lab. WSU. August, 2005.  
WIN Training. WSU. August, 2005.  
RRC Audience Analysis, KMUW. September, 2005.  
Public Interactive Services Review, KMUW. September, 2005.  
Audigraphics Pledge Analysis, KMUW. October, 2005.  
MRC Computer Users Training, MRC. WSU. October, 2005.  
WIN Training. WSU. November, 2005.  
WIN Training. WSU. January, 2006.  
WIN Training. WSU. March, 2006.

### Indika McCampbell

SIDLIT Conference. Overland Park, KS. August 2005  
Polycom User Group Annual Conference. Phoenix, AZ. October 2005  
Kan-ed Annual Membership Meeting. Wichita, KS. June 2006

### Charles Myers

2006 Mini NAB Wichita State University

### Lois M Nicholas

Communications Skills for Supervisors - CMD – October 19, 2005  
Banner Training: Finance – Self Service Finance – October 31, 2005  
File Management Training – October 28, 2005  
Digital Photo Beginners Workshop – November 8, 2005  
Digital Photo Intermediate Workshop – November 11, 2005  
Banner Training: Finance – Banner Requisitions – January 31 and February 1, 2006

Banner Training: Finance – Self Service Requisitions and Approval – February 2, 2006  
Banner Training: Interfund Input – February 23, 2006

**Chad Sloan**

Kan-ed Annual Membership Meeting & Leadership Forum. Wichita, KS. June 2006

**Carol J Smith**

Banner training: Finance – Banner Requisitions – January 30 and February 1, 2006.

**Lu Stephens**

Public Radio Development and Marketing Conference, Los Angeles, CA. July, 2005.  
ENCO Automation Training. KMUW. July, 2005.  
RRC Audience Analysis, KMUW. September, 2005.  
PRPD Program Director's Workshop, St. Louis, MO. September, 2005.  
Data Preparation for Panel, "Fishing Where the Fish Are," PRPD. St. Louis, MO.  
September, 2005.  
Audigraphics Pledge Analysis, KMUW. October, 2005.

**Elizabeth Willis**

Public Radio Development and Marketing Conference. Los Angeles, CA. July, 2005.  
Audigraphics Pledge Analysis, KMUW. October, 2005.  
Leadership Elite Seminar, Center for Management Development. December 2005-  
February 2006.

**Kerri Wood**

Dreamweaver MX 2004, New Horizons Learning Center. Wichita, KS. July, 2005.  
Public Interactive Services Review, KMUW. September, 2005.

**Mike Wood**

Elliott School of Communications Fall Retreat. WSU.  
Fall & Spring Robert L. Kindrick Lyceum Lectures. WSU.  
Banner Self Service Finance Training. WSU.  
Economic Outlook Breakfast. Wichita, KS.  
CCUMC National Fall Conference. Portland, OR. October, 2005.  
Partnerships for Learning. Teleconference. CPB & KPTS. June, 2006.

**PRESENTATIONS**

**Bridget Jones**

Represented WRRS at WRRS 4th Annual Mini-Golf Masters Tournament.  
October, 2005.  
Represented WRRS at booth at St. Anne Parish Health Fair. November, 2005.  
Interviewed by Wichita Register for coverage of WRRS. January, 2006.  
Represented WRRS at booth at Envision Health Fair at Towne West Mall.  
March, 2006.  
Interviewed by Derby Weekly Informer for coverage of WRRS and Volunteers,  
March, 2006.  
Represented WRRS at reception in recognition of bequest by Katherine Lyons,  
April 2006

**Mark McCain**

Panelist, "Fishing Where the Fish Are," PRPD. St. Louis, MO. September, 2005.  
Voiceover, Economic Outlook Conference. Wichita, KS. November, 2005.  
Represented KMUW at Kansas Senate and House Hearings for public broadcasting funding.  
Topeka, KS. February – April, 2006.  
Represented KMUW at K-State Job Fair. Manhattan, KS. March, 2006.  
Represented KMUW at WSU Career Fair. WSU. March, 2006.

Voiceover, 25<sup>th</sup> Anniversary Inge Festival. Independence, KS. April, 2006.  
Presented plaque to Richard King, in honor of Katherine Lyons estate gift for WRRS.  
WSU. April, 2006.

**Indika McCampbell**

“Wikis, Blogs, Discussion Groups, Blackboard™ and PowerPoint® Oh-My!” Sponsored by  
Center for Teaching and Research Excellence. WSU. March 2006.  
“Technology Update” Sedgwick County Clerks Training Institute. WSU. April, 2006.

**Charles Myers**

Host for SBE Kansas Chapter 3 meeting  
Host for The 2006 Mini NAB Wichita State University

**Elizabeth Willis**

Concert introductions at several concerts at the Summer Concert at the Zoo, Summer  
2005  
Lecture on Vincent Van Gogh and introduction to the film “Lust for Life” for the  
Wichita Film Festivals Artists on Film Series at WAM, July 2005  
Lecture on Paul Gauguin and introduction to the film “Moon and Sixpence” for the  
Wichita Film Festivals Artists on Film Series at WAM, July 2005  
Lecture on Pablo Picasso and introduction to the film “Surviving Picasso” for the  
Wichita Film Festivals Artists on Film Series at WAM, September 2005  
Lecture on Jan Vermeer and introduction to the film “Girl with the Pearl Earring” for  
the Wichita Film Festivals Artists on Film Series at WAM, October 2005

**Mike Wood**

“The Drama of Creation: Writers on Writing.” Writer/Director. Contracted and distributed by  
Films Media, Inc. New Jersey. August, 2005.  
“A Video Archive Becomes Accessible.” Presenter. Consortium of College and University  
Media Centers. Portland, OR. October, 2005.  
“The Last Hotel for Women.” Visual Consultant. WSU Theatre main stage production.  
October, 2005.  
“Touched.” Visual Designer. Theatrical premiere at The William Inge Theatre Festival,  
Independence, KS and at Washburn University, Topeka, KS. April, 2006.  
“Penn Avenue to Broadway: A 25-Year Retrospective.” Writer/Director. The William Inge  
Theatre Festival, Independence, KS. April, 2006.

**PUBLICATIONS/GRANT APPLICATIONS**

**Tom Brock**

FY 2005 \$1/\$1 Technology Grant for Mediated Classrooms - \$48,000

**Bridget Jones**

Bequest from estate of WRRS Listener Katherine Lyons  
Target Stores (pending)  
Kansas Lions (pending)  
Cessna Foundation (pending)  
Payless Foundation (pending)  
Raytheon Company (pending)  
Spirit Air (pending)  
Walgreen’s Community Foundation (pending)  
Bank of America Foundation (pending)  
AT&T Foundation (pending)  
Phillips Petroleum (pending)  
Jiffy Lube (pending)

**Mark McCain**

Co-Author, KPBC DA-400 Budget Document. August, 2005.  
Live & Learn Series, KUSM-W. August, 2005.  
Conference Evaluation Committee, PRPD. September, 2005.  
KPBC By-Laws Review Committee, KMUW. October, 2005.  
Station Activities Survey for the Corporation for Public Broadcasting. February, 2006.  
Judge, Michigan Association of Broadcasters Awards, KAB. March, 2006.  
Station Activities Survey for the Corporation for Public Broadcasting. February, 2006.

**Indika McCampbell**

Kan-ed Enhancing Technology Equipment Grant FY2006. Awarded \$10,000

**Lu Stephens**

FY 2006 \$1/\$1 Technology Grant for Off-Air Audio Logger System. February, 2006.  
Judge, Michigan Association of Broadcasters, KAB, March, 2006

**MEMBERSHIPS****Tom Brock**

Consortium of College and University Media Centers (CCUMC)  
Association of Higher Education Cable Television Administrators (AHECTA)  
Unclassified Professional Senate

**Jill Dizmang**

Development Exchange, Inc.

**Carla Eckels**

Women's Studies Community Council Advisory Board, WSU.

**Adriana Emmot**

Council of University Women (CUW) member.

**Kimberly D Jantz**

Council of University Women (CUW)

**Mark McCain**

Unclassified Professional Senate  
Legislative Committee  
Dining Services Committee  
Kansas Public Broadcasting Council; Member, Board of Directors; Treasurer; Executive  
Committee.  
Public Radio Program Directors  
Public Broadcasting Management Association  
SMART. WSU Marketing group. (Member)  
WRRS Development Board (Ex Officio Member)

**Indika McCampbell**

Polycom User Group (PUG)

**Mary Morriss**

CASE

**Charles Myers**

Society of Broadcast Engineers Kansas, Chapter 3

**Lois M Nicholas**

Council of University Women (CUW)

**Carol J Smith**

Council of University Women (CUW)

**Lu Stephens**

Development Exchange, Inc.  
Public Radio Program Directors

**Elizabeth Willis**

Ballet Wichita (Board Member)  
Development Exchange, Inc. (Member)  
Public Radio Association of Development Officers (Member)

**Mike Wood**

Consortium of College & University Media Centers (Member & Chair of Constitution and Bylaws Revision Task Force)  
Unclassified Professional Senate (Senator)  
Council of Deans and Directors (Member)  
Elliott School of Communication Faculty (Member)  
WRRS Board of Directors (Ex Officio Member)  
National Advisory Board. The William Inge Festival (Member)  
Campus Credit Union. (Board Member)  
WIN Leadership Team. (Member)

**HONORS OR AWARDS**

**Frank Dudgeon**

Kansas Association of Broadcasters 2005 Complete News Feature Award, 3<sup>rd</sup> place, for "WRRS Anniversary."

**Adriana Emmot**

Kansas Health Foundation Grant award.

**Elizabeth Willis**

Recognized by WSU for 10 years of service. Fall 2005  
Nominated for Mary Jane Teall Award for Best Actress in a Drama/Comedy for "You Can't Take it With You" at the Center for the Arts Theatre, Fall 2005  
Received Achievement Award for Third Highest Overall Score for Leadership Elite Seminar, Center for Management Development, February 2006

**Mike Wood**

Jerome Lawrence Award. The William Inge Center for the Arts. 2006.

**UNIVERSITY AND COMMUNITY SERVICE**

**Tom Brock**

Academic Operations Committee Member.  
Chair, System Administrator Search Committee  
Member, Interactive Technology Coordinator Search Committee

**Willie Burton**

Grove Park Coalition  
Central Northeast Development Committee

**Frank Dudgeon**

Represented KMUW at Media Sponsorship Booth at Music Theatre of Wichita. July-August, 2005.

**Carla Eckels**

Community in Unity Day, Wichita, KS. August, 2005.  
Black Arts Festival. Wichita, KS. September, 2005.  
Speaker - Morning Service Grant Chapel African Methodist Episcopal Church  
Women's Missionary Society Sunday. October, 2005.  
Wichita River Festival Gospelfest. May, 2006.

**Glenn Gunnels**

Overlook Neighborhood Association; Member, Media Technician, Photographer  
The Spiritual Life Center, The Catholic Diocese of Wichita; Volunteer, Media Technician  
MECDA (Middle-Eastern Cultural and Dance Association); Volunteer, Media Technician,  
Photographer  
Indian Student Association, WSU; Volunteer, Photographer

**Peter T. Lundrigan**

Member Association for Computing Machinery (ACM)  
Member Blackboard Developer Community  
WIN Portal Committee  
Assistant PackMaster – Pack 520 – Cub Scouts

**Mark McCain**

Unclassified Professional Staff Representative on WSU Dining Services Committee.  
Represented KMUW at WSU Faculty Orientation. WSU. August, 2005.  
Search Committee Member, MRC Systems Administrator. WSU. October, 2005.  
Name Reader for Graduate School Hooding Ceremony, WSU. December, 2005.  
Name Reader for WSU Graduation Ceremony, WSU. December, 2005.  
Name Reader for CHP Graduation Ceremony, WSU. May, 2006.  
Search Committee Chair, KMUW Producer/Announcer. WSU. June, 2006.

**Indika McCampbell**

Member, Search committee for MRC Systems Administrator  
Member, Search committee for MRC Interactive Technology Coordinator

**Carol J Smith**

WIN Communications Advisory Board – June 2005 – Present.  
KMUW FM 89, Wichita Public Radio, Spring 2006 Pledge Drive April 21-29, 2006. Phone  
Volunteer (4/22/06).  
Substitute Organist, First Baptist Church – Augusta, KS.  
Hand Bell Choir, First Baptist Church – Augusta, KS.  
Winfield Municipal Band, Winfield, KS, Instrument: Clarinet.

**Elizabeth Willis**

Represented KMUW at Media Sponsorship booths at Chamber Music at the Barn, Tuesdays on the Terrace and Concerts in the Garden at Botanica, Summer Concerts at the Zoo and Music Theatre of Wichita – Summer Seasons 2005; Old Cowtown Museum – Summer 2005; Fox Historic Theatre in Hutchinson, 2005-2006 Season; Wichita Art Museum, 2005-2006 Season; Ulrich Museum of Art at WSU 2005-2006 Season; Ballet Wichita Nutcracker, December 2005

Represented KMUW at Jazz Rent Party, April 2006

Served as Emcee (second year) for the 2<sup>nd</sup> Annual Donna Sweet Humanitarian Award Dinner and Concert, April 2006

**Kerri Wood**

Represented KMUW at Media Sponsorships at Sedgwick County Zoo, Botanica, Summer 2005.

Lord's Diner Volunteer, 2005.

**Mike Wood**

WIN Portal Team Lead. 2004 - 2006.

WRRS Mini-Masters Golf Tournament. Participant & Team Sponsor. September, 2005.

Fairmount Founders Dinner. WSU. Piano music provided.

Calvary United Methodist Church. Organist.

Stuff the Bus. Contributor. December, 2005.

Holman Screenwriting Competition. Coordinator. March, 2006.

Participated in following searches: MRC Systems Administrator, MRC Interactive Technology Coordinator, Vice President for Academic Affairs & Research, Associate Vice President for Academic Affairs & Director of Research Administration, Kansas Health Foundation Distinguished Chair of Communication

**TOURS PROVIDED FOR:**

Maize High School Mentors Program Faculty and Students. KMUW. May, 2006.