

# UNDERGRADUATE APPLICATION for ADMISSION and SCHOLARSHIPS

This packet contains instructions for completing the application and applying for scholarships at Wichita State University. Read the instructions thoroughly and fill out the form carefully and completely. If you have any questions, call the Office of Admissions at (316) 978-3085 or (800) 362-2594. You can also visit Admissions in the Marcus Welcome Center.

## 1 ADMISSION REQUIREMENTS

### 1-2 APPLYING FOR ADMISSION

### 3 SCHOLARSHIP OPPORTUNITIES

### 4 FINANCIAL AID

### 5 HOUSING OPTIONS

### 6 FIELDS OF STUDY

### 7-8 APPLICATION

### 9 CHECKLIST

---

#### DO THIS:

Complete application (front and back). Answer all related questions.

Sign and date application. We can't process your application without your signature.

Mail application and \$30 non-refundable application fee (check or money order) to the Office of Admissions.

Have required transcripts sent directly to Wichita State or hand-deliver them in a sealed official envelope to the Marcus Welcome Center.

Have official ACT or SAT scores sent directly to Wichita State.

Office of Admissions  
Wichita State University  
1845 Fairmount St.  
Wichita, Kansas 67260-0124



# admission requirements

## FRESHMEN

Note: These standards apply to those graduating from high school in 2001 or after.

### Kansas residents attending accredited high schools must:

- ▶ Achieve a minimum ACT composite of 21 or a minimum combined SAT-I of 980 (verbal and math scores), **OR**
- ▶ Rank in the top one-third of your high school's graduating class, **OR**
- ▶ Complete the Pre-College Curriculum\* with at least a 2.00 grade point average (GPA) on a 4.00 scale.

### Non-residents attending accredited high schools must:

- ▶ Achieve a minimum ACT composite of 21 or a minimum combined SAT-I of 980 (verbal and math scores), **OR**
- ▶ Rank in the top one-third of your high school's graduating class, **OR**
- ▶ Complete the Pre-College Curriculum\* with at least a 2.50 grade point average (GPA) on a 4.00 scale.

Kansas residents from non-accredited high schools (including permanent residents with international high school work) or home-schooled students can be admitted with a qualifying Kansas GED (see scores below). Students achieving an ACT minimum composite of 21 or a minimum combined SAT-I of 980 (verbal and math scores) are eligible for admission. Contact the Office of Admissions for the latest Qualified Admissions regulations regarding students from non-accredited schools.

Non-residents from non-accredited high schools are reviewed on a case-by-case basis. For more information, please contact the Office of Admissions.

### The Kansas Regents' Qualified Admissions Pre-College Curriculum requires:

- ▶ Four units\*\* of English.
- ▶ Three units of Natural Science (must include 1 unit of Chemistry or Physics).

- ▶ Three units of Math (at or above Algebra I level).
- ▶ Three units of Social Sciences (must include 1 unit of U.S. History, half a unit of Government and half a unit in World History, World Geography or International Relations).
- ▶ One unit of Computer Technology.  
\*\*One unit equals one year or two semesters of coursework.

\*Each Kansas high school has identified courses that meet the Kansas Board of Regents Pre-College Curriculum. For information on approved courses for your school, contact your counselor or visit the KBOR Web site at [www.kansasregents.org](http://www.kansasregents.org).

### GED students must:

- ▶ Have a minimum score of 510 on each sub-test and an overall score of 2550 to be admitted.

## TRANSFER STUDENTS

- ▶ With 24 or more transfer hours, must have a minimum cumulative GPA of 2.00 (on a 4.00 scale) on all previous college work.
- ▶ With 23 or fewer transfer hours, must have a minimum cumulative GPA of 2.00, **AND** meet one of the freshman qualified admissions requirements.

**Some academic colleges at Wichita State require a higher transfer GPA for admission. For more information contact the WSU Office of Admissions.**

Admission will remain open to Kansas residents over the age of 21 with fewer than 24 transfer credit hours who have graduated from an accredited high school or have qualifying GED scores.

## NON-DEGREE

See requirements and instructions in the non-degree section of this application packet.

# applying for admission

To be considered for admission, you must meet our admission requirements (see above) and submit the items listed below. We will notify you of your admission status after receiving all necessary items.

## DEGREE BOUND STUDENTS

**IMPORTANT: Although you may be admitted based solely on your ACT or transcript, BOTH must be on file, along with scholarship application items, for scholarship consideration.**

## FRESHMEN

Freshmen can apply anytime after their junior year of high school.

### What to send

- ▶ Completed and signed application.
- ▶ Official high school transcript (minimum of six semesters) or official GED results sent to Wichita State.  
Send graduation transcripts as soon as they are available. *See next page for WSU's transcript policy.*
- ▶ ACT or SAT scores sent **directly** from the testing agency or on an official high school transcript. *See next page for ACT/SAT policy.*
- ▶ Non-refundable \$30 application fee.

## TRANSFER

Transfer students should apply one semester before transferring to Wichita State.

### What to send

- ▶ Completed and signed application.
- ▶ Students with 1-23 transfer hours: Official high school and college transcripts sent to the WSU Office of Admissions, **AND** ACT or SAT scores sent **directly** from the testing agency or on an official high school transcript. *See below for WSU's transcript policy.*
- ▶ Students with 24 transfer hours or more: Official transcripts from **all** colleges you have attended sent to the WSU Office of Admissions. *See below for WSU's transcript policy.*
- ▶ Non-refundable \$30 application fee.

If students with credits from international colleges or universities want to be considered for transfer credit, you may need your syllabi sent to the Office of International Education. For complete details on how WSU awards international transfer credit, please visit: [www.wichita.edu/InternationalTransferCredit](http://www.wichita.edu/InternationalTransferCredit).

**Please note: By federal regulations, transfer students who plan to apply for federal financial aid must have an official high school or GED transcript sent directly to the WSU Office of Admissions. No federal aid can be awarded without proof of high school graduation on file.**

## RETURNING ADULT

Returning adults 21 years of age or older should apply well in advance of their semester of entry in order to be considered for admission and scholarships.

### What to send

- ▶ Completed and signed application.
- ▶ Students with 1-23 transfer hours: Official high school and college transcripts sent to the WSU Office of Admissions **OR** official GED transcript sent to the Office of Admissions. *See below for WSU's transcript policy.*
- ▶ Students with 24 transfer hours or more: Official transcripts from **all** colleges you have attended sent to the WSU Office of Admissions. *See below for WSU's transcript policy.*
- ▶ Non-refundable \$30 application fee.

## WSU TRANSCRIPT POLICY

All degree-bound students and most non-degree bound students must have official transcripts on file with the Office of Admissions. Students with less than 24 credit hours and under the age of 21 must also have ACT scores on file. Please see the table below to see how WSU will accept your **official** transcripts.

<b>HIGH SCHOOL</b>	Mailed directly from the high school or hand-carried in a sealed official school envelope (transcript must be an official transcript). Transcripts up to the final transcript can be faxed to (316) 978-3174. Final high school transcripts showing a graduation date <b>cannot</b> be faxed.
<b>COLLEGE</b>	Mailed directly from each college attended or hand-carried in a sealed official envelope (transcript must be an official transcript).
<b>GED</b>	Mailed directly from the state agency or hand-carried in a sealed official envelope (transcript must be an official transcript).
<b>ACT/SAT</b>	Must be sent directly from the ACT or SAT agency or on an official high school transcript*. <i>*Home-schooled students must have their ACT/SAT scores sent directly from the ACT or SAT agency.</i>

## NON-DEGREE BOUND STUDENTS

Students admitted in any of the following categories are not eligible for financial aid.

### A. Open Admission

If you meet one of the following criteria, you are eligible for open admission and need only to complete this application and submit your non-refundable application fee (indicate "K10A/B" on non-degree blank of application).

- ▶ If you have graduated from high school and have not attended any school for two years, **OR**
- ▶ If you have not graduated from high school, are at least 21 years of age, and have not attended any school for two years, **OR**
- ▶ If you are currently on active military duty, **OR**
- ▶ If you hold a baccalaureate or higher degree.

You may take up to 15 credit hours as an open admission student. At the end of the semester in which you earn the 15th credit, transcripts are required.

### B. General Non-degree Admission

If you do not fit in the open admission category, you may be admitted by completing this application and following these procedures:

- ▶ If you have no college work, send an official high school transcript to the WSU Office of Admissions. *See below for WSU's transcript policy.*
- ▶ If you have 24 or more college credits, have all colleges you have attended send official transcripts to the WSU Office of Admissions. If you have fewer than 24 credit hours, you must also have your high school transcript sent to Wichita State. *See below for WSU's transcript policy.*

### C. Guest Admission—College

If you wish to attend WSU as a college guest on a temporary basis with the work to be used at another institution, indicate "K09A" on the non-degree blank of the application. For summer guest admission, only the application and the non-refundable application fee are necessary. For the fall and spring semesters, a transcript sent from your home institution showing a 2.00 grade point average (4.00 scale) is required. Guest admission is renewable until you have taken 15 credit hours. *See below for WSU's transcript policy.* To take more than 15 hours, you must submit all transcripts required for degree-bound admission.

### D. Guest Admission—High School

High school students with a cumulative GPA of 3.00 may be eligible for guest admission after completion of their sophomore year. (Check non-degree and indicate "J09A" on the application.) Requests for guest admission by younger students will be considered on an individual basis. Students must have their high school transcript, including the semester immediately prior to the semester of guest enrollment, sent to Wichita State. Students must initial and sign the Responsibilities and Privileges Form as well as have their high school counselor or principal complete and submit a high school Guest Student Signature Form. All forms can be accessed online at <http://www.wichita.edu/admissions/guestprogram> or can be faxed to you by calling (316) 978-3085. High school guests may not take more than six credit hours each semester without special permission. Admission to WSU does not constitute permission by academic departments to take courses. All prerequisites for courses must be met. Students who have not completed their sophomore year must contact the Office of Admissions for permission to enroll. Failure to do so may result in an administrative drop from the course. Admission as a guest student **does not** guarantee admission as a degree-bound student. Students wishing to take additional guest courses after their first guest semester must maintain a 3.00 cumulative high school GPA and a 2.00 cumulative WSU GPA. **The deadline for high school guest admission is approximately one week prior to the first day of each semester and is posted on the above Web site prior to each semester.**

# scholarship opportunities

For U.S. citizen and permanent resident applicants only.

To be considered for scholarships, you must be admitted and must submit all required information.

**INCOMPLETE SCHOLARSHIP APPLICATIONS WILL NOT BE CONSIDERED.**

## FRESHMAN GENERAL SCHOLARSHIPS (HIGH SCHOOL STUDENTS)

These scholarships are awarded to qualifying students on a funds-available basis. Materials will be accepted after completion of the sixth semester of high school (end of junior year). Applications are reviewed in the order received by the scholarship committee and students will be notified of their scholarship status by the Office of Financial Aid. Applicants submitting scholarship materials prior to November 1 will receive notification in December. Applicants submitting scholarship materials between November 1 and February 1 will receive notification in March. Notifications for applications received after February 1 will be sent out on the basis of available funding.

### Renewable Scholarships:

These competitive merit scholarships are offered to the top academic students. Scholarship is based on GPA, ACT, strength of school curriculum, essay and record of extracurricular activities including community service and demonstrated leadership. Applicants must meet application priority deadline of November 1. Awarding is limited and competitive.

† Award: \$6,000 to \$20,000 (over four years)

† **Renewable general scholarships are not stackable. Only the largest offer will be awarded.**

### Non-Renewable Scholarships:

Preference is given to students with a minimum cumulative 3.0 GPA and an ACT composite score of 21. Scholarship is based on GPA, ACT, personal statement and involvement in extracurricular activities.

† Award: \$1,000 to \$4,000 (one year only)

## FRESHMAN SCHOLARSHIP APPLICATION PROCESS

**For general scholarship consideration, students must submit all of the following information:**

- ▶ An official transcript submitted to the WSU Office of Admissions.
- ▶ An official ACT or SAT score submitted to the WSU Office of Admissions.
- ▶ A **typed** essay limited to 1000 words describing what is important to you. Your essay allows us to get to know you beyond your grades and test scores. You may include special interests, talents, goals or unique experiences. It should not, however, be a restatement of your activity chart. Your essay should include long- and short-term goals.
- ▶ A **typed** activities chart including your academic, leadership, extracurricular, community service and work experiences. Specify time commitment and any leadership roles or special accomplishments. Use the format indicated on the next page.

## OTHER NEW INCOMING FRESHMAN SCHOLARSHIP OPPORTUNITIES

**Sedgwick County Scholars**-Awarded to residents of Sedgwick County who submit a quality scholarship application and meet one of the following criteria; have an ACT composite score of 21 or higher (SAT 980), rank in top 1/3 of high school graduating class, or be an admissible student who participated in Kansas Kids or USD 259 GEAR-UP Program (must note GEAR-UP on application).

† Award: \$2,000 to \$4,000 (over two years)

**Distinguished Scholarship Invitational (DSI)**-students with a minimum 3.50 cumulative high school GPA, minimum ACT composite score of 24, and who are fully admitted by October 1 of their senior year of high school will be sent an invitation to participate. Completed DSI applications will be considered for general scholarships.

**National Merit Finalists**-students named NM Finalists by the National Merit Scholarship Corporation and who select WSU as their school of first choice by April 1 of their senior year of high school will be offered a full-ride scholarship.

**Major-Specific Scholarships**-students can apply for scholarships through their respective academic college. These scholarships may be awarded through competitions and auditions, and/or require separate applications. You are encouraged to contact the academic college of your major for these scholarship opportunities. Contact information can be found at [www.wichita.edu/financialaid/scholcoordinators](http://www.wichita.edu/financialaid/scholcoordinators).

**Other Institutional/Organizational Scholarships**-scholarships are awarded through various on-campus and off-campus resources. Additional information and specific guidelines and application materials can be found through links provided at [www.wichita.edu/scholarships](http://www.wichita.edu/scholarships).

## TRANSFER STUDENT GENERAL SCHOLARSHIPS

**For consideration, students must submit all of the following information:**

- ▶ An official college transcript including cumulative GPA and a list of all courses taken and grades received. Students transferring with less than 24 hours must also submit an official high school transcript and ACT scores, which will be included in the application review. Preference is given to students with a minimum cumulative GPA of 3.00.
- ▶ A **typed** essay limited to 1000 words describing what is important to you. Your essay allows us to get to know you beyond your grades and test scores. You may include special interests, talents, goals or unique experiences. It should not, however, be a restatement of your activity chart. Your essay should include long- and short-term goals.
- ▶ A **typed** activities chart including your academic, leadership, extracurricular, community service and work experiences during college. Additionally, students with fewer than 24 transfer hours can include high school activities. Use the format indicated on the next page.
- ▶ Phi Theta Kappa and HALO Scholarship—In addition to submitting the transfer student scholarship paperwork, members of Phi Theta Kappa and/or HALO should submit a letter of recommendation from their advisor and a separate activities chart including all of their Phi Theta Kappa and/or HALO activities to be considered for these scholarships. Awarding is limited and competitive.

† **Priority deadline is February 1. Awards are made on a funds-available basis. Awarding is highly competitive. Apply early to be given full consideration. Award: \$1,000 to \$4,000.**

## RETURNING ADULT SCHOLARSHIPS

- ▶ Returning Adult Scholarships are one-time awards available to **incoming/new** returning adult students seeking their first bachelor's degree. This includes students who have never attended college or are returning to school after having been out of school for 2 or more years.
- ▶ Submit a **typed**, one-page essay telling us more about yourself. You may use your statement to highlight your special interests, talents, goals or unique experiences. **Please include long-range goals.** The essay allows you to provide additional information for consideration by the scholarship committee.
- ▶ Financial Aid Information. The university's scholarship committee will check the Free Application for Federal Student Aid (FAFSA) to verify your financial need information.

† Scholarships for returning adult students are awarded based on the semester the student enters WSU. Awards are made on a funds-available basis. Apply early to be given full consideration.

## MERIT PLUS NEED SCHOLARSHIP

Students who want to be considered for need based scholarships must complete their Free Application for Federal Student Aid (FAFSA) by the WSU priority date of March 1. The FAFSA can be completed online annually at [www.fafsa.ed.gov](http://www.fafsa.ed.gov).

<b>ACTIVITIES CHART</b>	Dates of Activity / From - To	Number of Hours per Week and/or Total Hours per Event	Special Accomplishments/ Leadership Positions
A. School Activities 1. 2. 3.			
B. Volunteer/Community Service 1. 2. 3.			
C. Work for Pay 1. 2. 3.			

sample

## financial aid

### APPLYING FOR FEDERAL FINANCIAL AID

- ▶ Complete the Free Application for Federal Student Aid (FAFSA). You can complete the FAFSA online at [www.fafsa.ed.gov](http://www.fafsa.ed.gov).
- ▶ List WSU in Step 6 of the FAFSA and include WSU's federal school code, 001950. This will authorize release of your data to WSU.
- ▶ File your FAFSA annually by the end of February. Some programs have limited funds, and filing the FAFSA early will allow you to be considered for them. (Remember to apply for admission to WSU. Your request for financial aid can be processed only after you have been fully admitted as a degree-bound student.) For questions, contact the Office of Financial Aid at (316) 978-3430 or (800) 522-2978.

### FEDERAL FINANCIAL AID PROCESS

- ▶ An evaluation of your FAFSA, called a Student Aid Report, will be sent to you and sent electronically to WSU. (The results of your SAR are based on a formula developed by the U.S. Department of Education. The formula calculates an expected family contribution based on factors such as family income, assets, family size, number of family members in college, and other information.)
- ▶ WSU will request additional information or determine the financial aid it can offer you and send you an award notification.
- ▶ You will need to follow the instructions in your award notification to either accept or decline your awards.

## orientation

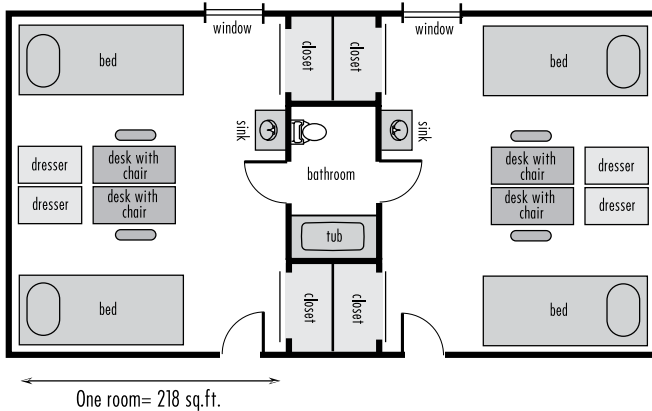
The mission of the Orientation program at Wichita State University is to excite new students about being a part of the Shocker community and aid in their academic and social transition to Wichita State. Orientation provides resources and events regarding the many opportunities and services available to new students at WSU. All new degree-bound freshmen and transfer students with fewer than 24 transferable hours must schedule a one-on-one Shocker Connection advising appointment with an academic advisor in the student's field of study. The advisor will help the student build an appropriate schedule and register for those courses. These students are also required to attend an orientation program. There are many orientation options from which students can choose including overnight camps, one-day programs, transfer and returning adult programs or enrollment in an Introduction to the University class. During these programs, students will get their Shocker Card (ID), learn about important policies and services as well as meet other new Shockers. Once a student is admitted to WSU, he or she is sent information about Orientation and what to do next. For more information, call the Office of Admissions at (316) 978-3085 or (800) 362-2594.



# WSU housing options

## FAIRMOUNT TOWERS

Fairmount Towers—two five-story towers located on the northwest corner of campus—is a traditional residence hall with on-site dining facilities. Students live in furnished suites, with residents of two rooms sharing a bathroom. The cafeteria offers hot meals, convenient hours and a variety of meal plans. Students also have access to shared kitchens and computer labs in each tower. Each floor has its own TV lounge, and a game room is available in the commons.



## BRENNAN HALL

Brennan Hall is located on the south side of campus. Students live in furnished suites, with residents of two rooms sharing a bathroom. A community kitchen and computer lab are available. Students may choose from the meal plan options available in Fairmount Towers or purchase Shocker Dollars and eat in any on-campus dining facility.

## WHEATSHOCKER APARTMENTS

Wheatshocker Apartments, located on the east side of campus, overlooks Wichita State's beautiful Braeburn Golf Course. Each apartment is equipped with a kitchen and a bathroom. The number of bedrooms available ranges from one to four, and students can choose either furnished or unfurnished units. Upper-class single students, married couples and students with children are welcome in Wheatshocker.

## SPECIALTY HOUSING

### FINE ARTS FLOOR

One floor in Fairmount Towers is reserved for students majoring in fine arts.

### HEALTH PROFESSIONS FLOOR

One wing in Fairmount Towers is reserved for students majoring in health professions.

### HONORS FLOOR

One floor in Fairmount Towers is reserved for students in the Emory Lindquist Honors Program.

### EXTENDED QUIET HOURS FLOOR

This floor offers residents an environment in which quiet standards are such that no noise should be heard outside one's room 24 hours a day.

### SHOCKERS SCHOLARS FLOOR

This floor is reserved for students who have been awarded a scholarship through WSU's scholarship competitions or who participate in WSU's varsity athletic teams.

You and your family can schedule a tour. For more information about a campus visit, contact the WSU Office of Admissions at (316) 978-3085 or (800) 362-2594. You can also e-mail [admissions@wichita.edu](mailto:admissions@wichita.edu) or visit [www.admissions.wichita.edu](http://www.admissions.wichita.edu) and click on "Campus Visits."

**AT WSU, ALL FRESHMEN ARE REQUIRED TO LIVE ON CAMPUS\* (YOU CAN THANK US LATER).**

It's not a punishment, or some secret tactic we've come up with to keep an eye on you. Our policy requiring freshmen to live on campus is just our way of making sure you get the most out of your time at Wichita State, and a big part of that is having fun.

Oh, did we mention that students who live on campus statistically do better in school and are more likely to graduate?

**That means your parents will be happy, too.**

\*Exceptions are made for freshmen who are 21 or older; married; living with a parent, legal guardian, grandparent, aunt, or uncle in Sedgwick County; taking fewer than nine credit hours; or living in official Greek housing. All freshmen who do not plan to live on campus—including those who fall into one of the above categories—are required to complete and submit a Freshmen Exemption Form. Students submitting a Freshmen Exemption Form will receive a written reply from Housing and Residence Life.

## RATES

The average room and board rate for a double room (with a roommate) in Fairmount Towers for the 2009-2010 academic year is \$6,060 based on a 19 Max Meal Plan. The average room and board rate for a standard double room (with a roommate) in Brennan Hall for the 2009-2010 academic year is \$5,350 based on a 19 Max Meal Plan. The average apartment rate for an unfurnished apartment in Wheatshocker (without a roommate) for the 2009-2010 academic year is \$445 a month, not including a meal plan.

Rates include room/apartment, meal plan (depending on the building/contract), all utilities (heating and air conditioning), local telephone service with voice mail, basic cable television service, an activity fee and data connections.

**For more information, contact WSU Housing and Residence Life at (316) 978-3693 or e-mail [housing.wsu@wichita.edu](mailto:housing.wsu@wichita.edu).**

# UNDERGRADUATE FIELDS OF STUDY FOR FRESHMEN AND TRANSFERS

Use the following codes to indicate your academic interest on the application.

## BUSINESS (BA)

B11A Accounting  
B12L Business Administration  
B13A Economics  
B13B Economics - Real Estate  
B12M Entrepreneurship  
B16F Entrepreneurship-Real Estate  
B12D Finance  
B16B Finance - Real Estate  
B12N Human Resource Management  
B12K International Business  
B12F Management  
B15A Management Information Systems  
B12G Marketing  
B16D Marketing - Real Estate

## EDUCATION (ED)

D13T Athletic Training  
D20B Early Childhood Unified  
D21A Elementary Education  
D13M Exercise Science  
D24F Middle Level-English/Science  
D24J Middle Level-English/History  
D24K Middle Level-History/Math  
D24L Middle Level-History/Science  
D24N Middle Level-Math/English  
D24P Middle Level-Math/Science  
D23K Pre K-12-Physical Education  
D23F Pre K-12-French  
D23N Pre K-12-Spanish  
D22B Secondary Education-Biology  
D22C Secondary Education-Chemistry  
D22S Secondary Education-Earth & Space Science  
D22E Secondary Education-English/Language Arts  
D22H Secondary Education-History/Government  
D22J Secondary Education-Journalism  
D22M Secondary Education-Mathematics  
D22P Secondary Education-Physics  
D13R Sport Management

## ENGINEERING (EN)

E11B Aerospace Engineering  
E17A Computer Engineering  
E31A Computer Science  
E12B Electrical Engineering  
E13B Industrial Engineering  
E15A Manufacturing Engineering  
E14C Mechanical Engineering  
E10P Undecided Engineering

## FINE ARTS (FA)

### School of Art and Design

F16C Ceramics  
F18A General Art/Art History (BA)  
F17A Graphic Design  
F23A Pre K-12-Art Education  
F16B Printmaking  
F16D Sculpture  
F16A Studio Art/Painting

### School of Music

F32C Instrumental (strings)  
F32B Instrumental (wind)  
F13B Music Theory/Composition  
F32H Organ  
F32E Piano  
F32G Piano Accompanying  
F32F Piano Pedagogy  
F23I Pre K-12-Music Education-Instrumental  
F23K Pre K-12-Music Education-Keyboards  
F23D Pre K-12-Music Education-Special  
F23V Pre K-12-Music Education-Vocal  
F32A Vocal Performance

### School of Performing Arts

F25B Dance  
F30M Musical Theatre  
F22T Secondary Education-Speech/Theatre  
F30F Theatre (BA)  
F30T Theatre-Design & Technology  
F30P Theatre-Performance

## Fine Arts Undecided

F18U Undecided Art & Design  
F10U Undecided Fine Arts  
F12U Undecided Music  
F30U Undecided Performing Arts

## HEALTH PROFESSIONS (HP)

H10U Health Professions-Undecided  
H28H Health Science  
H10C Pre-Communication Sciences and Disorders  
H10D Pre-Dental Hygiene  
H10H Pre-Health Services Management & Community Development  
H10M Pre-Medical Technology  
H10N Pre-Nursing  
H10Y Pre-Physical Therapy  
H10P Pre-Physician Assistant

## LIBERAL ARTS AND SCIENCES (LA)

A10U Deciding Majors  
A28A Anthropology and Archeology  
A50G Associate of Arts  
A12A Biological Sciences  
A12T Biology: Biochemistry Field Major  
A13A Chemistry  
A13E Chemistry: Biochemistry  
A13T Chemistry: Biochemistry Field Major  
A13V Chemistry: Business Field Major  
A13M Chemistry: Pre-Medicine  
A32P Communication (pre-major)  
Broadcast Journalism  
Electronic Media  
Integrated Marketing Communication  
Open Emphasis  
Print Journalism  
Strategic Communication  
A39A Criminal Justice  
A10C Economics  
A14B English: Creative Writing  
A14A English Language and Literature  
A43Q Ethnic Studies Field Major  
A45Q Geography Field Major  
A16A Geology  
A17Q German Field Major  
A36Q Gerontology Field Major  
A18A History  
A34B International Studies: Administration Field Major  
A34A International Studies: Area Studies Field Major  
A20A-C Mathematics/Statistics  
A26R Modern & Classical Languages & Literatures  
French, Spanish  
A24A Philosophy  
A21A Physics  
A22A Political Science/Public Administration  
A39E Pre-Forensic Science  
A10R Pre-Law  
A10S Pre-Medicine: Medicine, Dentistry, Optometry, Pharmacy,  
Veterinary, Chiropractic, and Podiatry  
A42B Pre-Social Work  
A23A Psychology  
A15Q Religion Field Major  
A25A Sociology  
A35A Women's Studies

## Bachelor of General Studies

A43K Ethnic Studies  
A45K Geography  
A36K Gerontology  
A15K Religion

## NON-DEGREE CODES

K09A College Guest  
J09A High School Guest  
K11A Non-Degree Bound, General  
K10A/B Open Admission



**APPLICATION FOR NEW STUDENT ADMISSION AND SCHOLARSHIPS**

Please read attached instructions. Type or print. For U.S. citizens and permanent resident applicants only.

**SECTION 1. APPLICANT INFORMATION**

Social Security number (optional) \_\_\_\_\_ Date of birth \_\_\_\_\_  Male  Female

Legal last name \_\_\_\_\_ First name \_\_\_\_\_ Middle name \_\_\_\_\_ Other names used on records (including maiden name) \_\_\_\_\_  
(Please use legal name as it appears on your Social Security card.)

Mailing address \_\_\_\_\_

City \_\_\_\_\_ State \_\_\_\_\_ Zip \_\_\_\_\_ County \_\_\_\_\_

Area code and phone number \_\_\_\_\_ E-mail address where you'd like to receive WSU updates \_\_\_\_\_

Permanent address (if different from mailing) \_\_\_\_\_

Please respond to the following questions related to your ethnicity and race. (Optional)

1. Ethnicity: Are you Hispanic or Latino?  Yes  No

2. Select one or more of the following racial groups.

- American Indian or Alaska Native  Asian  Black or African-American  Native Hawaiian or other Pacific Islander  White

Are you a U.S. citizen?  Yes  No

Are you a permanent resident?  Yes  No (If yes, please send a copy of your permanent residence card.)

A# \_\_\_\_\_ Date issued \_\_\_\_\_

Country of citizenship \_\_\_\_\_

If you answered "no" to both of the above questions, what is your immigration or visa status? \_\_\_\_\_

Note: If you are an international student, you should complete an international application at [www.wichita.edu/international](http://www.wichita.edu/international).

**SECTION 2. PARENT OR GUARDIAN INFORMATION (COMPLETE ONLY IF YOU ARE UNDER 21.)**

Name of parent(s) or guardian(s) \_\_\_\_\_ Relationship \_\_\_\_\_ Parent/guardian area code and phone number \_\_\_\_\_ E-mail \_\_\_\_\_

Parent/guardian street address \_\_\_\_\_ City \_\_\_\_\_ State \_\_\_\_\_ Zip \_\_\_\_\_

**SECTION 3. KANSAS RESIDENCY INFORMATION**

All questions left blank will be considered evidence of a non-Kansas resident.

Are you a resident of the state of Kansas?  Yes  No If "yes," when did you begin living continuously in Kansas? Month \_\_\_\_\_ Day \_\_\_\_\_ Year \_\_\_\_\_

If "no," and you have ever lived in Kansas, please state the period of time you lived in Kansas: Month \_\_\_\_\_ Year \_\_\_\_\_ to Month \_\_\_\_\_ Year \_\_\_\_\_

If you relocated to Kansas, from which state did you move? \_\_\_\_\_

Last year, did anyone claim you as a dependent for income tax purposes?  Yes  No

Are either of your parents or guardians a Kansas resident?  Yes  No If yes, how long? \_\_\_\_\_

Are you on active military duty?  Yes  No If yes, is duty station in Kansas?  Yes  No

(detach here)

**SECTION 4. ACADEMIC INFORMATION**

When will you enter WSU? Semester:  Fall  Spring  Summer Year 20\_\_\_\_

**A. Check the category in which you plan to enroll:**

Enter the major/degree code for your proposed program of study or A10U if you are still considering your major. Please see attached "Undergraduate Fields of Study" for specific category code.

**Degree-bound** Major Code \_\_\_\_\_  **Non-degree bound** Non-degree Code \_\_\_\_\_  
 \*If high school guest (J09A), which degree-bound major would you like to be? \_\_\_\_\_

**B. Schools attended:**

High School/GED \_\_\_\_\_ City/State \_\_\_\_\_ Graduation Date \_\_\_\_\_

Have you attended any other college or university? If yes, please complete the box below. Include all colleges you have attended.

College Name	City/State	Dates Attended	Hours Earned	Degree\Certificate earned

**SECTION 5. INSTITUTIONAL INFORMATION**

Are either of your parents alumni of WSU?  Yes  No  
 Would you like information on fraternities or sororities?  Yes  No  
 Are you a WSU employee?  Yes  No  
 Are you a dependent of a WSU employee?  Yes  No  
 Housing plans:  on-campus  with parents  other  
 If transferring to WSU, how many hours are you currently enrolled in? \_\_\_\_\_ How many cumulative hours will you have when you transfer? \_\_\_\_\_  
 My level of interest in WSU (check one):  I will be attending WSU  I will likely attend WSU but considering other schools  WSU is amongst my top three choices

Did either of your parents graduate from a four-year college or university?  Yes  No  
 Are you a veteran of the United States military?  Yes  No  
 Are you interested in learning more about the Emory Lindquist Honors Program?  Yes  No  
 Do you have a bachelor's degree?  Yes  No

**SECTION 6. SUPPLEMENTARY INFORMATION FOR SCHOLARSHIP CONSIDERATION**

Those wishing to be considered for Incoming Freshmen or Transfer Scholarships need to complete both A & B. Returning Adult scholarship applicants need only complete B.

- A. Activities Chart** summarizing involvement in school, community and work experience. See attached "Scholarship Opportunities" section for details.
- B. Essay** limited to 1,000 words highlighting special interests, unique experiences and long-term goals. See attached "Scholarship Opportunities" section for details.

**SECTION 7. STUDENT CERTIFICATION AND SIGNATURE**

I certify that all the answers I have given in this application are accurate to the best of my knowledge. I understand that falsifying or failing to disclose information could result in my dismissal from Wichita State. My Social Security number and student status data may be provided to other state agencies for use in detection of fraudulent or illegal claims against state monies. If awarded a scholarship, my name only may be released to the media.

Signature of Applicant \_\_\_\_\_

Date \_\_\_\_\_

**MAIL APPLICATION** and \$30 non-refundable application fee (check or money order) to: Office of Admissions  
 Wichita State University  
 1845 Fairmount St.  
 Wichita, Kansas 67260-0124

## BEFORE YOU LICK THE ENVELOPE

Make sure you have included all of the necessary forms and information by completing the following checklist:

- Application completed and signed
- Application fee enclosed
- Activities chart completed (see Scholarship Application Requirements)
- Essay included (see Scholarship Application Requirements)

## DON'T FORGET

- Have required transcripts sent directly to Wichita State or hand-deliver them in a sealed official envelope to the Marcus Welcome Center.
- Official ACT and/or SAT scores sent from the testing agency or on an accredited high school transcript.

## GET IT OVER WITH

Apply early. Students must be admitted before they can be considered for university scholarships including the Distinguished Scholarship Invitational (DSI). Scholarships are awarded on the first-applied, first-considered basis. In addition, you cannot enroll in classes until you are fully admitted. Applying early for admission and scholarships gives you the best chance to get the classes you want and first crack at scholarship dollars.

## INSTANT MESSAGE A WSU ADMISSIONS REPRESENTATIVE

Yahoo IM ID: *shockertalk*

MSN Messenger ID: *shockertalk@hotmail.com*

AOL IM ID: *shockertalk*

*Service available when classes are in session, Monday-Friday, 9 a.m.-5 p.m.*



Printed on recycled paper  
Please pass along or recycle again

### Notice of Nondiscrimination

Wichita State University does not discriminate in its programs and activities on the basis of race, religion, color, national origin, gender, age, sexual orientation, marital status, status as a veteran or disability. The following person has been designated to handle inquiries regarding nondiscrimination policies:  
Director, Office of Equal Employment Opportunity, Wichita State University, 1845 Fairmount, Wichita KS 67260-0205; telephone (316) 978-6791.

## SCHEDULE YOUR VISIT

Call Admissions at (316) 978-3085 or toll-free, (800) 362-2594, or visit [www.admissions.wichita.edu](http://www.admissions.wichita.edu). Please give at least two weeks' notice.

## NUMBERS TO KNOW

- ▶ Admissions  
(316) 978-3085 or (800) 362-2594
- ▶ Financial Aid  
(316) 978-3430 or (800) 522-2978
- ▶ Housing and Residence Life  
(316) 978-3693
- ▶ Orientation  
(316) 978-3085 or (800) 362-2594
- ▶ Student Life  
(316) 978-3023

## WHERE WE ARE

- ▶ Main Campus  
Office of Admissions  
Marcus Welcome Center  
Mike Oatman Drive  
1845 Fairmount St.  
Wichita, Kansas 67260  
(316) 978-3085 or  
toll-free (800) 362-2594
- ▶ West Campus  
37th Street & Maize Road  
Maize, Kansas 67101
- ▶ South Campus  
200 W. Greenway, Suite 15A  
Derby, Kansas 67037

## MAIL APPLICATION

Mail application and \$30 non-refundable application fee (check or money order) and have transcripts sent to:

Office of Admissions  
Wichita State University  
1845 Fairmount St.  
Wichita, Kansas 67260-0124