



WICHITA STATE UNIVERSITY
Women's Association

August 15, 2007

Naomi greets the new year

**WSU Women's Association Board
2007-2008**

- President Naomi Strong
- 1st VP Membership Rhonda Cantrell
- 2nd VP Programs Charlotte Kieffner
- Secretary Carol Zumwalt
- Treasurer Mary Ann Carpers
- By-laws/ long range planning Julie Scherz
- Courtesy Ellie Duram
- Curator Betty Holmer
- Honorary Shirley Beggs, 1st Lady
- Historian Lorraine Madway
- Interest Groups Martha L. Lewis
- New Member Chair Shannon Giessel
- Newsletter Barbara Knapp
- Parliamentarian Liorah Golomb
- Publicity Virginia Murphey
- Scholarship Celia Goering
- Social Chair "T" Borresen
- Telephone Alice Kreisler
- Yearbook Corinne Nilsen

President's Message

As the summer comes to a close and a new academic year begins, I want to thank you for your support this past year. It's been a pleasure to meet new members and enjoy the activities of this fine organization.

As we welcome a new year, the Program Committee has been working hard to plan some wonderful events. You will see in this newsletter what

they have planned for the next couple of months
I am pleased to tell you that we will be launching a new website for the Women's Association!
We will keep you informed through the newsletter as this project develops.

The Yearbook and organization's brochure will have a different look, too. A list of our Board members for the upcoming year is included in this newsletter.

Please take the time to review the website and these materials as they are revealed. We hope you will feel free to provide your comments to us.
We enclosed a membership form for your convenience. Renew early so your information can be included in the new Yearbook. Please join us again as we enjoy the many benefits of membership in this organization. You'll be glad you did!

The purpose of the Wichita State University Women's Association is to serve the interests of the University, to provide student scholarships, and to promote social interaction and a sense of community among its members.



WSU WOMEN'S ASSOCIATION INTEREST GROUPS

Check all groups in which you want to continue membership or in which you are interested in joining.

_____ Bridge, Afternoon _____ New Members

_____ Bridge, Evening * _____ Stitch & Chatter

_____ Healthy Heart Gourmet * _____ Book Club *

_____ Lunch Bunch _____ WSU Treasures*

*denotes evening meetings
Depending on membership requests, Interest Groups may change from time to time.
Members are welcomed and encouraged to suggest new Interest Groups.

WSU WOMEN'S ASSOCIATION MEMBERSHIP FORM

Name _____

Spouse's Name (if married) _____

Address _____

Hm Phone _____ Wk Phone _____

E-Mail _____

WSU Department _____

Campus Box Number _____

_____ Please check here if you are willing to receive your newsletter by email to help reduce mailing costs, and provide more money for scholarships.

Please return with a \$15 check

*annual dues by **October 5** to:*

WSU Women's Association

Box 117

Wichita State University

Wichita, KS 67260-0117

_____ New member

_____ Returning member

Additional contributions for scholarship or general operating expenses are always welcome! To ensure your inclusion in the yearbook, join now!

Receipt of your dues and this form assures your membership in any of the above interest groups of the WSU Women's Association.

Questions? Call Martha L. Lewis, 978-5929 (Office)

Members' Dessert Meeting

Friday, September 21st

Larksfield Place Auditorium 7373 E. 29th St North

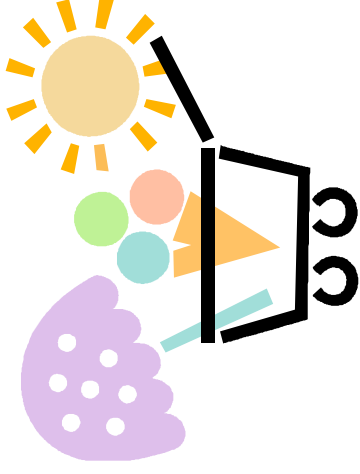
3:00 p.m. Desserts Greet Newcomers - Naomi Strong

3:30 p.m. Program "W.S.U. Updates" Dr. Donald Beggs, President W.S.U.

Co-Hostesses: Marjorie Lee Taylor and Ardis Sowards.

Please make your reservations to Shannon Giessel, Newcomers Coordinator,

Phone: 978-3801 or email: shannon.giessel@wichita.edu by September 13th.



You are All invited to the Members' Fall Brunch

Hostess: First Lady Shirley Beggs

W.S.U. President's Home, 1820 N. Hillside

Thursday, October 18th 11:00 a.m.—1:00 p.m.

Program: Gregg Marshall, W.S.U. Basketball Coach

Reservations: Marcella Mohr, 683-5004 by October 11th

Mark your calendars and save the date



*Betty Angulo Memorial
Concert Series*

*Wichita Brass Quintet &
Friends*

*Sunday September 9, 2007
First Presbyterian Church
525 North Broadway*

Free

WSU Women's Association

We will soon be on the WEB

TREASURES

WSU Treasures are the scholars, researchers, teachers, performers and service people who present and discuss subjects of their choice. All members and their friends are welcome but need to call first. This is an opportunity to meet other WSU members on a more personal basis.

Chair: Charlotte Kleffner:
kleffnercf@aol.com or 686 3274



Inside this issue:	
President's Message	1
Membership & Interest Group Form	2
Please print and return	
September Meeting Reservations Due 9/13	3
October Meeting Reservations Due 10/11	3
Betty Angulo Memorial Concert	3
Treasures Schedule	4

SEPTEMBER 28 Pat Dooley & Jon Walstrom Slide presentation: **OUR TRIP TO GREECE AND TURKEY**

Rain Tree Village Clubhouse, 7700 East 13th St.
 Reservations: kleffnercf@aol.com or 686 3274

OCTOBER 26 Julianne McLean **CELEBRATION OF LIFE**
 200 Clifton Place – Recreation Room
 Reservations: Wdmil@aol.com or 684 1080

NOVEMBER 30 Phil Allen THE STEM CELL DILEMMA

JANUARY 25 June Allen

THE MYSTERY & FASCINATION OF CELLULAR MEMORY

FEBRUARY 29 Charlotte and Frank Kleffner
LANDAU/KLEFFNER SYNDROME: BRUSSELS' SYMPOSIUM

MARCH 28 Julie Scherz

STROKE PREVENTION & ADVANCES IN REHABILITATION

APRIL 25 Cheryl Smith, Owner of Creative Catering
FROM MUSIC TO CATERING!