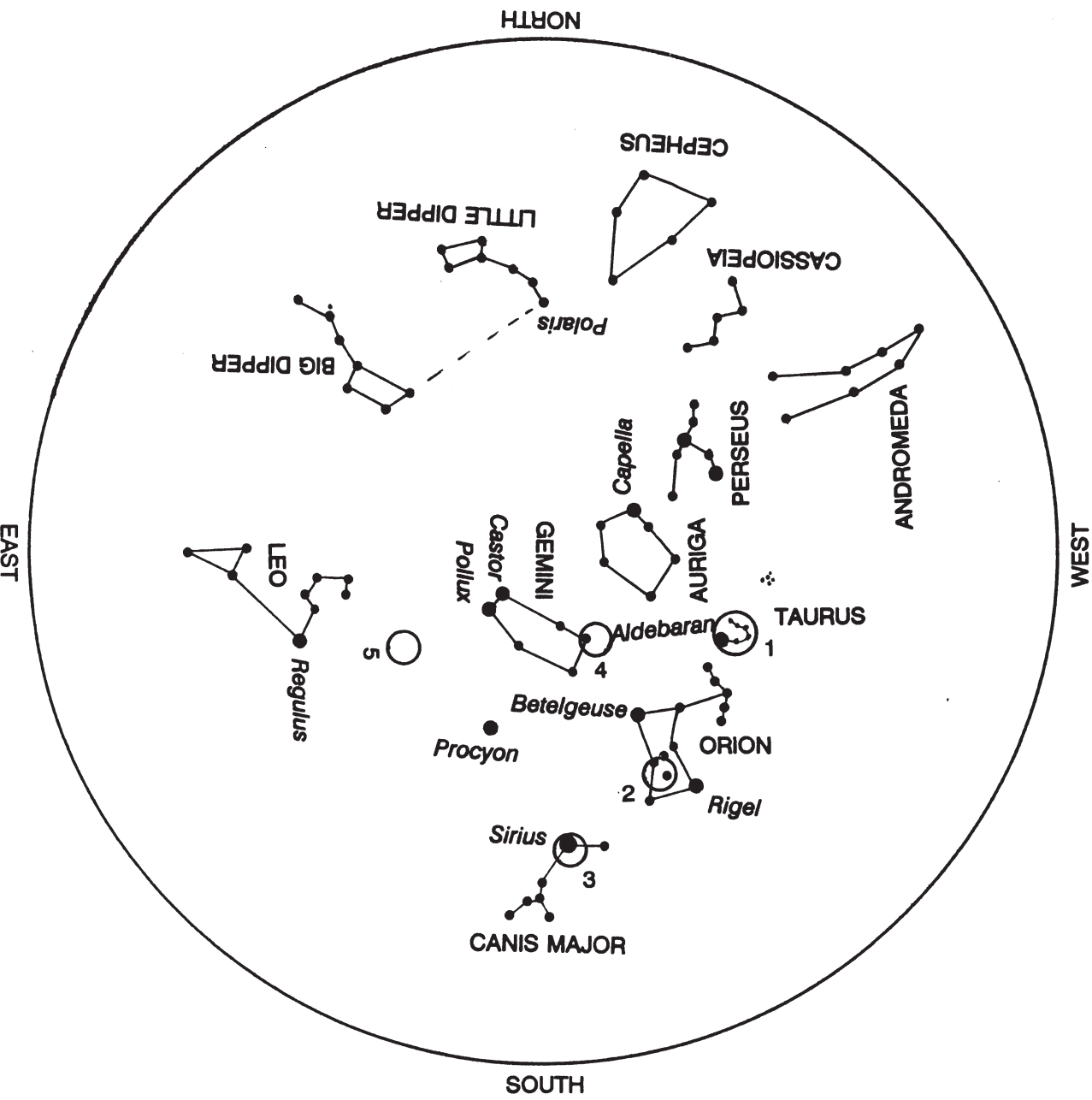
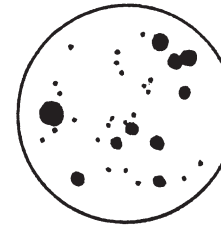


March (Approximately 7:30 p.m.)

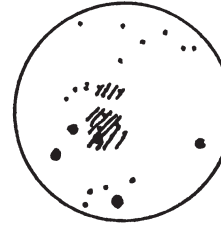


1. Hyades



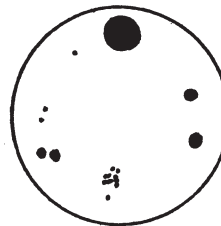
Open Cluster in Taurus - "V" shaped head of Taurus the Bull.
 Only 140 ly away, this cluster is one of the closest open clusters to us. The bright central region is approximately 8 ly in diameter and contains 132 stars. Aldebaran, the bright "eye" of the bull which appears to lie on the edge of the cluster, is not actually a member of this cluster. Aldebaran lies half way between us and the cluster.

2. Orion Nebula



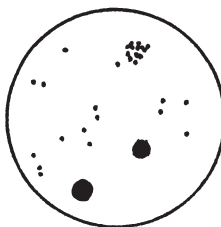
Diffuse Nebula in Orion R.A. 05^h 32.9^m Dec. -5° 25'
 Other names: M42 or NGC 1976
 The fuzzy second star in Orion's sword is the brightest diffuse nebula in our skies. M42 lies about 1700 ly away. Its bright central region is 5-6 ly across with the rest of the nebula stretching out to approximately 30 ly in diameter. M42 will appear as a pale, wispy cloud through your binoculars.

3. M41



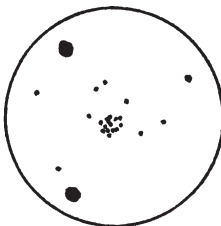
Open Cluster in Canis Major R.A. 06^h44.9^m Dec. -20°42'
 Other name: NGC 2287
 Just below the brightest star in the night sky, Sirius, this cluster can be seen with the naked eye in a very dark sky. M41 lies at a distance of 2350 ly and has a diameter of 20 ly. The cluster contains 25 bright stars and as many as 150 fainter stars.

4. M35



Open Cluster in Gemini R.A. 06^h05.7^m Dec. 24°20'
 Other name: NGC 2168
 A few individual stars can be resolved in this bright cluster. M35 is 2200 ly away and has a diameter of 30 ly. On dark clear nights, this cluster can sometimes be seen with the naked eye as a faint cloud.

5. M44



Open Cluster in Cancer R.A. 08^h37.5^m Dec. 19°52'
 Other names: NGC 2632, the Praesepe, the Beehive cluster
 M44 is one of the largest and brightest open cluster that can be seen from Earth. It lies 525 ly away and most of its 200 stars lie within a space of 13 ly. M44 can easily be seen with the naked eye on a dark, clear night. The cluster will appear as a faint cloud.